

Skip directly to the section that covers your version of Windows (7, Vista or XP)

Quick Start for **DATS** on **Windows 7**

*** VERY IMPORTANT SAFETY NOTE ***

NEVER connect the test leads of the DATS to a speaker that is connected to any other equipment or to an equipment ground! Severe damage could occur to the DATS unit or to the other equipment! Only connect the DATS to an unconnected loudspeaker.

Here are step-by-step instructions to get you going quickly. Later, as you wish to learn more about using DATS, you can refer to the built-in User's Guide found under the Help menu.

1) Install the DATS software.

Insert the DATS CD into your PC's drive and allow the file named "DATS_setup.exe" to auto-play.

(Alternately you can double-click on the file "DATS_setup.exe" to start the installation process.)

Follow the on-screen instructions to complete the software installation. **Do not launch the software yet.**

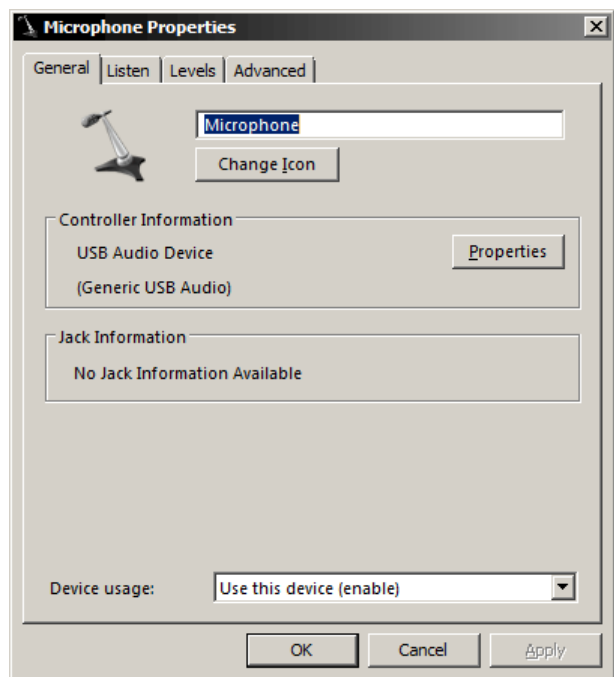
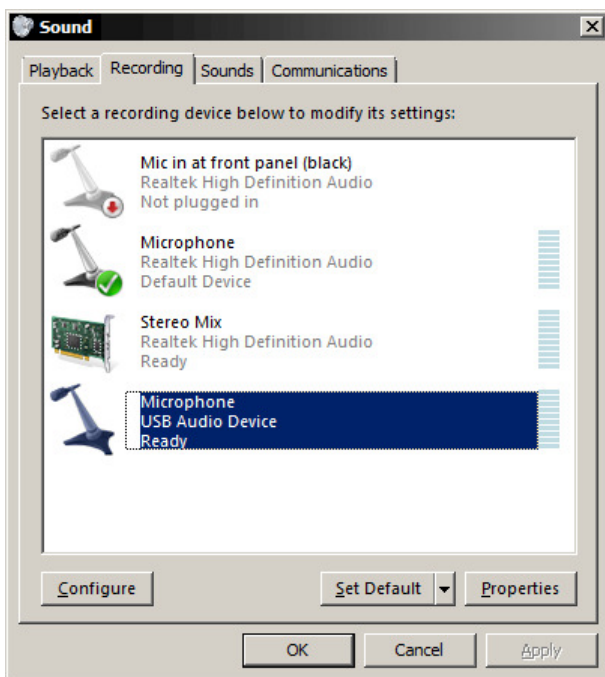
Check for available upgrades at: <http://www.trueaudio.com/DATS>

2) Connect the DATS hardware unit to any convenient USB port on your computer.

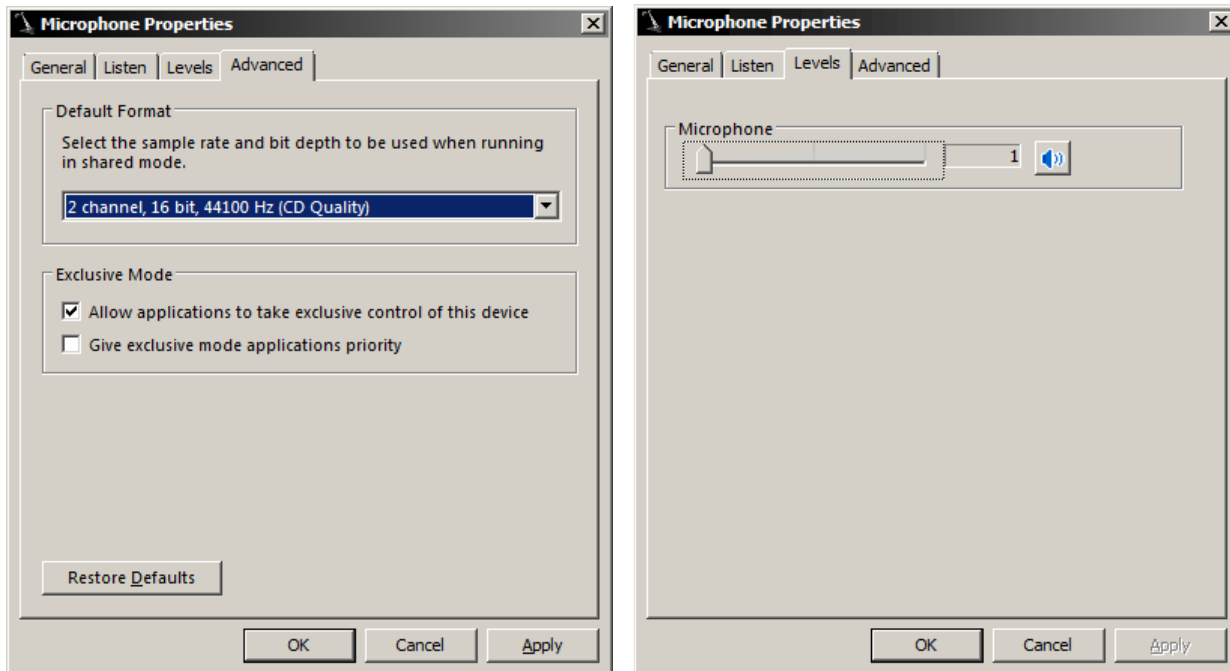
Upon being connected and powering up the unit **requires a full 90 seconds to stabilize before measurements can be made.** After this plug-in delay, impedance measurements take only a few seconds to complete. Any USB port can be used with DATS but each port remembers its setup. For this reason you can either use DATS with one particular USB port or you can setup each of your USB ports in turn to use DATS. It is not a bad idea to just plug the unit into each port in sequence and set each port for 2-channel input as required for DATS. The 90 sec. settling time is related to the requirement for precision measurements down to 1 Hz.

3) Setup the USB port for 2-channel input and verify the input level for Windows 7.

From the Windows "Start" button select Control Panel/Sound. Once the Sound control panel opens select the "Recording" tab as seen below (left). Next, double-click on the device "USB Audio Device" to open the Properties window seen below (right). Note that on Windows 7 the DATS hardware may appear as "USB Audio CODEC", "USB Audio Device" or similar.



Switch to the “Advanced” tab and select “**2 channel, 16 bit, 44100 Hz (CD Quality)**” as seen below (left). *Now click Apply* (or it will not remember the following level change). Next, select the “Levels” tab set the level is set to exactly “1” as seen below (right). These two steps are *critical* as DATS will not operate with the default audio settings of maximum level and 1 channel input.



Click the “OK” button once to close the Properties window and then click “OK” again to close the Sound Control Panel. Disconnect the DATS USB unit from the first USB port and repeat this setup sequence for each USB port on your PC that you wish to be setup for use with DATS. You should only need to do this one time as each USB port remembers its own settings separately from the other ports.

4) Raise the Windows volume control to maximum.

From the task bar, raise the Windows volume control to maximum.

5) Launch the DATS application software.

From the Windows “Start” button select “All Programs” then select “DATS”. The DATS software will launch.

6) Calibrate the test leads.

From the DATS “Impedance Analyzer” menu select “Test Leads Calibration...”. Short the test leads by clipping them together and click OK to calibrate the software for the test lead resistance. The test lead resistance should be less than 1 Ohm as seen at the bottom right of the DATS screen. If not, wait a few seconds and try again...the hardware needs a full 90 seconds to stabilize after power up. If the test leads should fail to calibrate then select “Impedance Calibration...” under the Impedance Analyzer menu, click on “Restore Default Calibration” and repeat the test leads calibration procedure.

7) Calibrate at 1k Ohms.

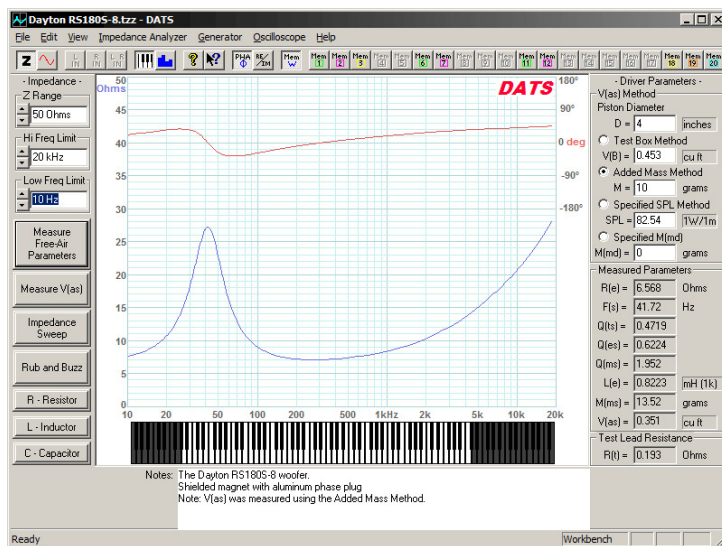
Select “Impedance Calibration” under the “Impedance Analyzer” menu and follow the instructions to calibrate the system at 1k Ohms using the supplied precision 1% resistor. The software will test the resistor and plot the results. The calibrated impedance is displayed and the calibration is complete. Verify that the value displayed in the R(e) field at the right side of the screen is reasonably close to 1000 Ohms. If not, repeat the calibration procedure making sure the hardware has had a full 90 seconds to stabilize. A measured value between 950 and 1050 Ohms is expected.

8) Connect the DATS alligator clips to the terminals of the speaker to be tested.

The speaker **MUST NOT BE CONNECTED** to anything else such as an amplifier, other electrical equipment or ground. For best results clamp the driver in place and allow adequate clearance for any rear pole piece vents.

9) Click on the "Measure Free Air Parameters" button at the left of the DATS window.

You should hear the sweep and then see the impedance response of the driver appear on the screen similar to the screen below. The speaker's free air parameters are displayed in the Parameters Bar at the right side of the screen. At the left side you can set the upper impedance limit and the high and low frequency limits.



10) Measure the driver's V(as).

Once you have measured the speaker's free air parameters the "Measure V(as)" button becomes enabled. Select one of the three methods to measure the V(as) at the upper right side of the DATS screen. The three V(as) measurement methods are:

Test Box Method	- requires a suitable test box
Added Mass Method	- requires you to add a known mass
Specified SPL Method	- requires the SPL be known
Specified M(MD) Method	- requires the M(MD) be known

Enter the required data and then press the "Measure V(as)" button to start the measurement procedure.

11) After measuring the speaker you can:

- Save the data to one of 20 project memories.
- Save a DATS project file (file type .DATS) which includes your test setup and all 20 memories.
- Export the parameters and impedance data in either .txt or .zma formats.
- Overlay plots of various measured impedances from the 20 memories for detailed comparison.
- Print a report showing the impedance and parameters of the displayed memories.

12) Quit DATS.

Quit the DATS application software by using "Ctrl+Q" from the keyboard or by selecting "Exit" under the "File" menu. On exit the software saves your application settings for the next session.

13) Future sessions with DATS.

In the future when you want to use DATS you only need to connect the DATS hardware unit, raise the master volume and then launch the DATS software. If you happen to launch the software first you will then need to select "Audio Device Selection..." under the "Edit" menu so that DATS can scan for the hardware and select it for use. The software will retain its calibration from session to session but it is still a good idea to verify the calibration at the start of each session by sweeping the supplied calibration resistor or some other resistor of known value.

Troubleshooting

If there is a problem, review the USB port setup in Step 3. Also, remember that the hardware unit requires a full 90 seconds to stabilize after power up. During this time the sweep may not be heard and measurements will not be valid.

Quick Start for **DATS** on **Windows Vista**

*** VERY IMPORTANT SAFETY NOTE ***

NEVER connect the test leads of the DATS to a speaker that is connected to any other equipment or to an equipment ground! Severe damage could occur to the DATS unit or to the other equipment! Only connect the DATS to an unconnected loudspeaker.

Here are step-by-step instructions to get you going quickly. Later, as you wish to learn more about using DATS, you can refer to the built-in User's Guide found under the Help menu.

1) Install the DATS Software.

Insert the DATS CD into your PC's drive and allow the file named "DATS_setup.exe" to auto-play. (Alternately you can double-click on the file "DATS_setup.exe" to start the installation process.) Follow the on-screen instructions to complete the software installation. **Do not launch the software yet.**

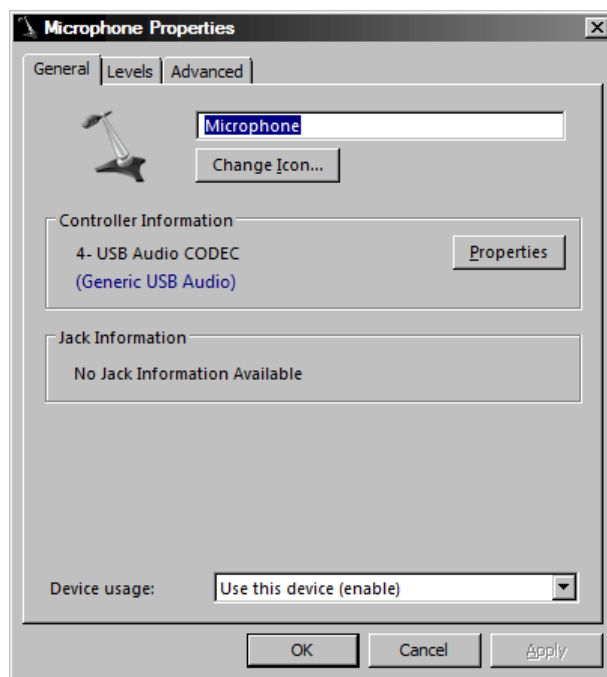
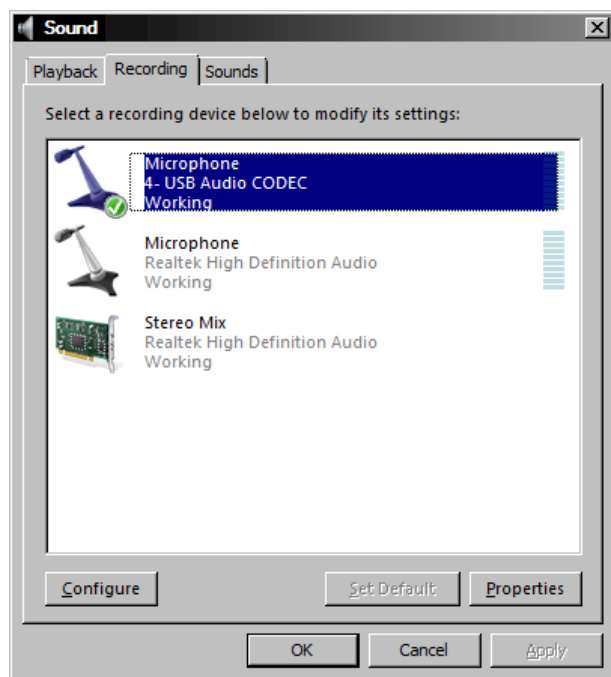
Check for available upgrades at: <http://www.trueaudio.com/DATS>

2) Connect the DATS hardware unit to any convenient USB port on your computer.

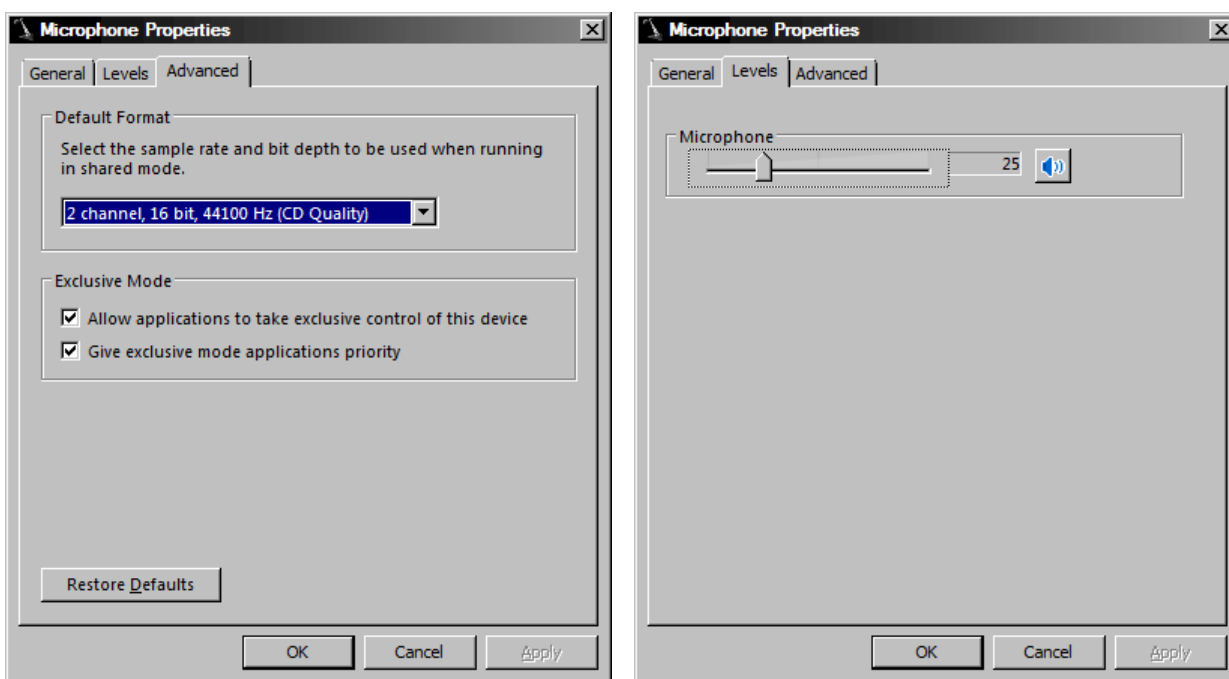
Upon being connected and powering up the unit requires a full 90 seconds to stabilize before measurements can be made. After this plug-in delay, impedance measurements take only a few seconds to complete. Any USB port can be used with DATS but each port remembers its setup. For this reason you can either use DATS with one particular USB port or you can setup each of your USB ports in turn to use DATS. It is not a bad idea to just plug the unit into each port in sequence and set each port for 2-channel input as required for DATS. The 90 sec. settling time is related to the requirement for precision measurements down to 1 Hz.

3) Setup the USB port for 2-channel input and verify the input level for Windows Vista.

From the Windows "Start" button select Control Panel/Sound. Once the Sound control panel opens select the "Recording" tab as seen below (left). Next, double-click on the device "USB Audio CODEC" to open the Properties window seen below (right).



Switch to the “Advanced” tab and select “**2 channel, 16 bit, 44100 Hz (CD Quality)**” as seen below (left). This step is *critical* as DATS will not operate with the default audio setting of 1 channel input. Next, select the “Levels” tab and verify that the level is set to “25” as seen below (right).



Click the “OK” button once to close the Properties window and then click “OK” again to close the Sound Control Panel. Disconnect the DATS USB unit from the first USB port and repeat this setup sequence for each USB port on your PC that you wish to be setup for use with DATS. You should only need to do this one time as each USB port remembers its own settings separately from the other ports.

4) Raise the Windows volume control to maximum.

From the task bar, raise the Windows volume control to maximum.

5) Launch the DATS application software.

From the Windows “Start” button select “All Programs” then select “DATS”. The DATS software will launch.

6) Calibrate the test leads.

From the DATS “Impedance Analyzer” menu select “Test Leads Calibration...”. Short the test leads by clipping them together and click OK to calibrate the software for the test lead resistance. The test lead resistance should be less than 1 Ohm as seen at the bottom right of the DATS screen. If not, wait a few seconds and try again...the hardware needs a full 90 seconds to stabilize after power up. If the test leads should fail to calibrate then select “Impedance Calibration...” under the Impedance Analyzer menu, click on “Restore Default Calibration” and repeat the test leads calibration procedure.

7) Calibrate at 1k Ohms.

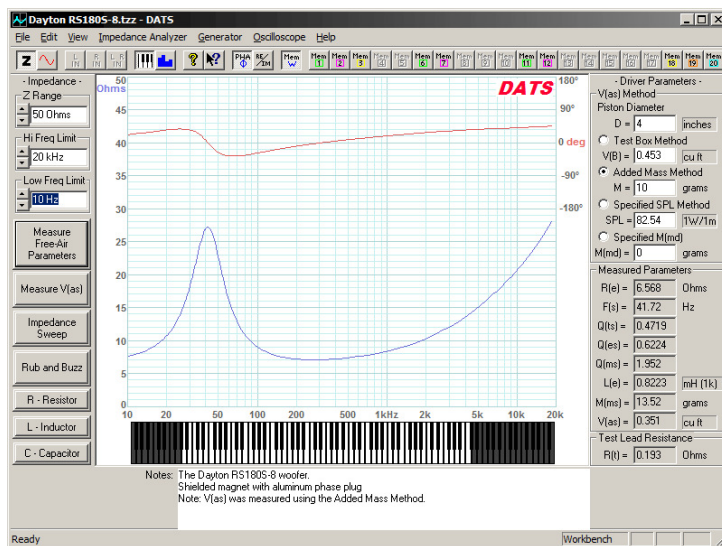
Select “Impedance Calibration” under the “Impedance Analyzer” menu and follow the instructions to calibrate the system at 1k Ohms using the supplied precision 1% resistor. The software will test the resistor and plot the results. The calibrated impedance is displayed and the calibration is complete. Verify that the value displayed in the R(e) field at the right side of the screen is reasonably close to 1000 Ohms. If not, repeat the calibration procedure making sure the hardware has had a full 90 seconds to stabilize. A measured value between 950 and 1050 Ohms is expected.

8) Connect the DATS alligator clips to the terminals of the speaker to be tested.

The speaker **MUST NOT BE CONNECTED** to anything else such as an amplifier, other electrical equipment or ground. For best results clamp the driver in place and allow adequate clearance for any rear pole piece vents.

9) Click on the "Measure Free Air Parameters" button at the left of the DATS window.

You should hear the sweep and then see the impedance response of the driver appear on the screen similar to the screen below. The speaker's free air parameters are displayed in the Parameters Bar at the right side of the screen. At the left side you can set the upper impedance limit and the high and low frequency limits.



10) Measure the driver's V(as).

Once you have measured the speaker's free air parameters the "Measure V(as)" button becomes enabled. Select one of the three methods to measure the V(as) at the upper right side of the DATS screen. The three V(as) measurement methods are:

Test Box Method	- requires a suitable test box
Added Mass Method	- requires you to add a known mass
Specified SPL Method	- requires the SPL be known
Specified M(MD) Method	- requires the M(MD) be known

Enter the required data and then press the "Measure V(as)" button to start the measurement procedure.

11) After measuring the speaker you can:

- Save the data to one of 20 project memories.
- Save a DATS project file (file type .DATS) which includes your test setup and all 20 memories.
- Export the parameters and impedance data in either .txt or .zma formats.
- Overlay plots of various measured impedances from the 20 memories for detailed comparison.
- Print a report showing the impedance and parameters of the displayed memories.

12) Quit DATS.

Quit the DATS application software by using "Ctrl+Q" from the keyboard or by selecting "Exit" under the "File" menu. On exit the software saves your application settings for the next session.

13) Future sessions with DATS.

In the future when you want to use DATS you only need to connect the DATS hardware unit, raise the master volume and then launch the DATS software. If you happen to launch the software first you will then need to select "Audio Device Selection..." under the "Edit" menu so that DATS can scan for the hardware and select it for use. The software will retain its calibration from session to session but it is still a good idea to verify the calibration at the start of each session by sweeping the supplied calibration resistor or some other resistor of known value.

Troubleshooting

If there is a problem, review the USB port setup in Step 3. Also, remember that the hardware unit requires a full 90 seconds to stabilize after power up. During this time the sweep may not be heard and measurements will not be valid.

Quick Start for **DATS** on **Windows XP**

*** VERY IMPORTANT SAFETY NOTE ***

NEVER connect the test leads of the DATS to a speaker that is connected to any other equipment or to an equipment ground! Severe damage could occur to the DATS unit or to the other equipment! Only connect the DATS to an unconnected loudspeaker.

Here are step-by-step instructions to get you going quickly. Later, as you wish to learn more about using DATS, you can refer to the built-in User's Guide found under the Help menu.

1) Install the DATS software.

Insert the DATS CD into your PC's drive and allow the file named "DATS_setup.exe" to auto-play. (Alternately you can double-click on the file "DATS_setup.exe" to start the installation process.) Follow the on-screen instructions to complete the software installation. **Do not launch the software.**

Check for available upgrades at: <http://www.trueaudio.com/DATS>

2) Connect the DATS hardware unit to any convenient USB port on your computer.

Upon being connected and powering up **the unit requires a full 90 seconds to stabilize before measurements can be made.** After this plug-in delay, impedance measurements take only a few seconds to complete. The 90 sec. settling time is related to the requirement for precision measurements down to 1 Hz.

3) Launch the DATS application software.

From the Windows "Start" button select "All Programs" then select "DATS".

4) Calibrate the test leads.

From the DATS "Impedance Analyzer" menu select "Test Leads Calibration...". Short the test leads by clipping them together and click OK to calibrate the software for the test lead resistance. The test lead resistance should be less than 1 Ohm as seen at the bottom right of the DATS screen. If not, wait a few seconds and try again...the hardware needs a full 90 seconds to stabilize after power up. If the test leads should fail to calibrate then select "Impedance Calibration..." under the Impedance Analyzer menu, click on "Restore Default Calibration" and repeat the test leads calibration procedure.

5) Calibrate at 1k Ohms.

Select "Impedance Calibration" under the "Impedance Analyzer" menu and follow the instructions to calibrate the system at 1k Ohms using the supplied precision 1% resistor. The software will test the resistor and plot the results. The calibrated impedance is displayed and the calibration is complete. Verify that the value displayed in the R(e) field at the lower right side of the DATS screen is reasonably close to 1000 Ohms. If not, repeat the calibration procedure making sure the hardware has had a full 90 seconds to stabilize. A measured value between 950 and 1050 Ohms is expected.

6) Connect the DATS alligator clips to the terminals of the speaker to be tested.

The speaker **MUST NOT BE CONNECTED** to anything else such as an amplifier, other electrical equipment or ground. For best results clamp the driver in place and allow adequate clearance for any rear pole piece vents.

7) Click on the "Measure Free Air Parameters" button at the left of the DATS window.

You should hear the sweep and then see the impedance response of the driver appear on the screen. The speaker's free air parameters are displayed in the Parameters Bar at the right side of the screen. At the left side you can set the upper impedance limit and the high and low frequency limits.

8) Measure the driver's V(as).

Once you have measured the speaker's free air parameters the "Measure V(as)" button becomes enabled. Select one of the three methods to measure the V(as) at the upper right side of the DATS screen. The three V(as) measurement methods are:

Test Box Method	- requires a suitable test box
Added Mass Method	- requires you to add a known mass
Specified SPL Method	- requires the SPL be known
Specified M(MD) Method	- requires the M(MD) be known

Enter the required data and press the "Measure V(as)" button to start the measurement procedure.

9) After measuring the speaker you can:

- Save the data to one of 20 project memories.
- Save a DATS project file (file type .DATS) which includes your test setup and all 20 memories.
- Export the parameters and impedance data in either .txt or .zma formats.
- Overlay plots of various measured impedances from the 20 memories for detailed comparison.
- Print a report showing the impedance and parameters of the displayed memories.

10) Quit DATS.

Quit the DATS application software by using "Ctrl+Q" from the keyboard or by selecting "Exit" under the "File" menu. On exit the software saves your application settings for the next session.

11) Future sessions with DATS.

In the future when you want to use DATS you only need to connect the DATS hardware unit and then launch the DATS software. If you happen to launch the software first you will need to first select "Audio Device Selection..." under the "Edit" menu so that DATS can scan for the hardware and select it for use. The software will retain its calibration from session to session but it is still a good idea to verify the calibration at the start of each session by sweeping the supplied calibration resistor or some other resistor of known value.

Troubleshooting

If there is a problem, open the Windows Sound Control Panel and select the Audio tab. Then select the Default device to be the "USB Audio CODEC" (this is the DATS hardware) as shown below at the left. Click on "Volume..." to open the mixer shown below at the right. Make sure the "Speaker" and "Wave" volumes are set to maximum and that the corresponding balance controls are set to center. Once the Volumes are set correctly, the Default device does not have to remain set to the "USB Audio CODEC" and can be set to another device if necessary.

