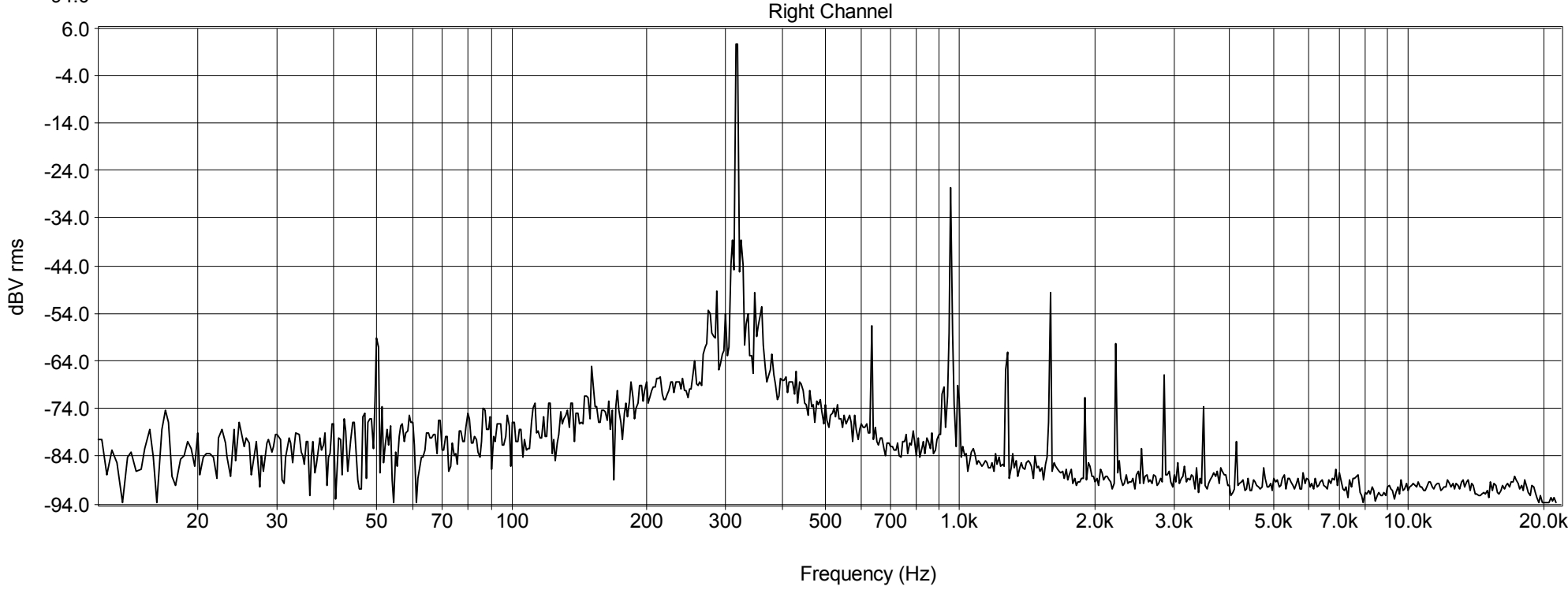
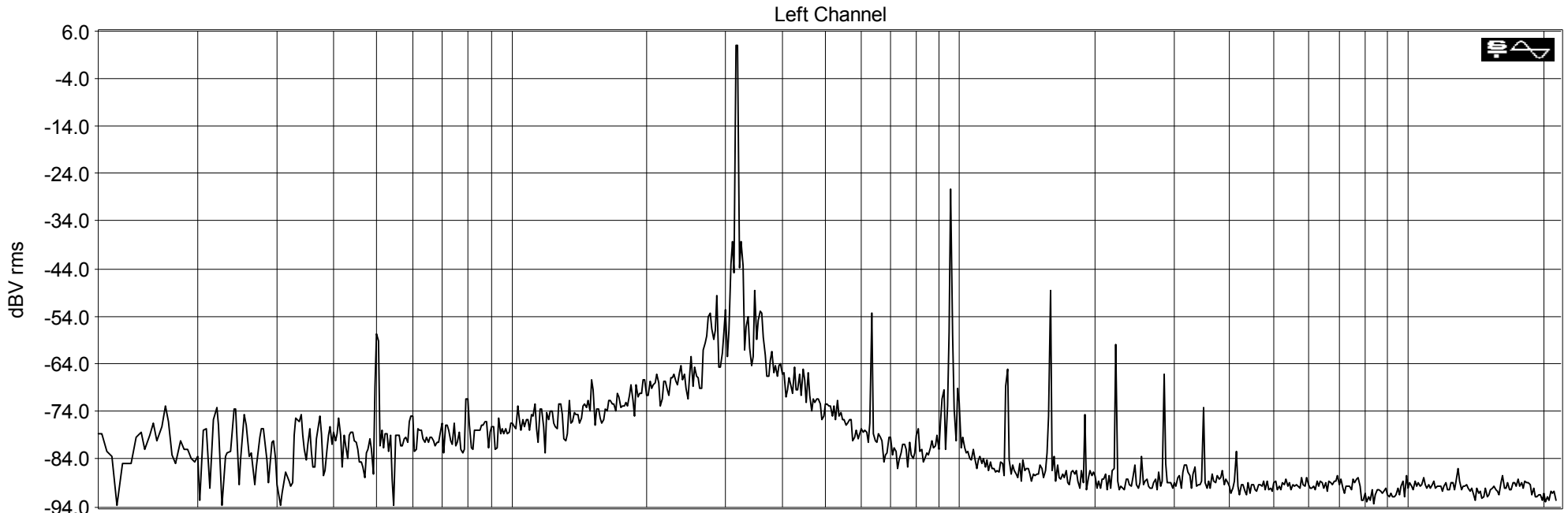


Sampling: 44100 Hz
FFT size: 131072
Averaging: 1
Window: Hanning
Overlap: 0 %

MOL315@250nWb ref.level
Maxell Metal Capsule 50 (white)

Printed by: SpectraLAB - FFT Spectral Analysis System
Licensed to: Boost
Wed Nov 16 02:34:56 2011





maxell.

High Resonanceproof Cassette Mechanism
EXTRA WIDE DYNAMIC RANGE • LOW DISTORTION
POSITION • METAL

METAL 50
Capsule

POSITION • IEC TYPE IV • METAL

METAL IN CAPSULE

- High quality METAL tape
- Oval window cassette shell
- Soft touch capsule

METAL
Capsule

50

www.maxell.com METAL 50

POSITION • IEC TYPE IV • METAL

METAL Capsule

50

RECORDING TIME ————— 50 min. (2×25)

METAL CAPSULE SPECIFICATIONS

* Optimum Bias		dB	0
	315Hz	dB	+0.5
	6,300Hz	dB	+1.5
	12,500Hz	dB	+2.0
* Sensitivity		dB	+2.5
	16,000Hz	dB	+2.5
	315Hz	dB	+6.5
	10,000Hz	dB	+0.5
Electro-acoustic Properties		dB	-57.0
MOL		dB	
AC Bias Noise		dB	

* Indicates deviation from IEC TYPE IV reference tape.

MAXELL FULL WARRANTY We warrant to the user of this product that it is free from defective materials and workmanship. If the product proves unsatisfactory, it will be replaced if returned to Maxell Corporation of America, 1400 Parker Road, Conyers, Georgia 30207. *Manufacturer, distributor and seller shall not be liable for consequential commercial damages.*

MAXELL CORPORATION OF AMERICA
22-08 ROUTE 208, FAIR LAWN, NJ 07410
Made in Japan

