

Sampling: 44100 Hz
FFT size: 131072
Averaging: 1
Window: Hanning
Overlap: 0 %

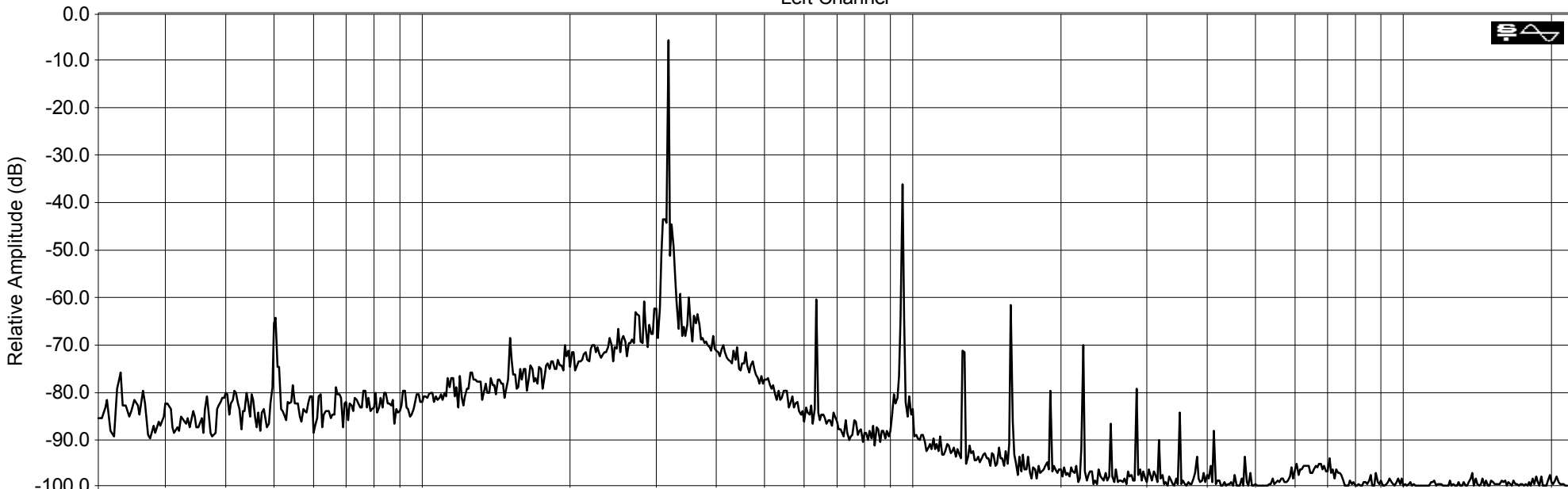
MOL315 Sony CDit90 (E.C.)

Printed by: SpectraLAB - FFT Spectral Analysis System
Licensed to: boost
Mon Oct 31 03:00:46 2011

Left Channel

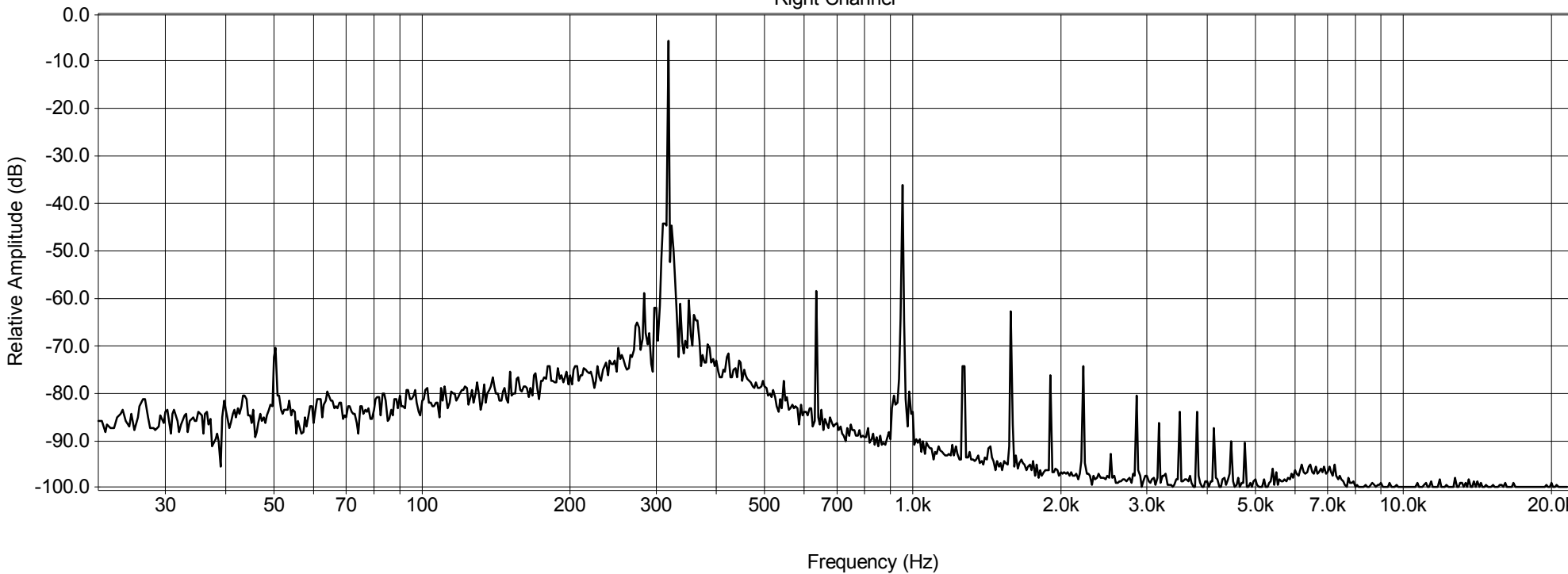


THD: 2.93547 %
Peak: -5.216 dB
Power: -5.309 dB



Right Channel

THD: 2.99442 %
Peak: -5.378 dB
Power: -5.500 dB



Sampling: 44100 Hz
FFT size: 131072
Averaging: 1
Window: Hanning
Overlap: 0 %

MOL315
Ref.level 250nWb

Printed by: SpectraLAB - FFT Spectral Analysis System
Licensed to: boost
Mon Oct 31 03:01:22 2011

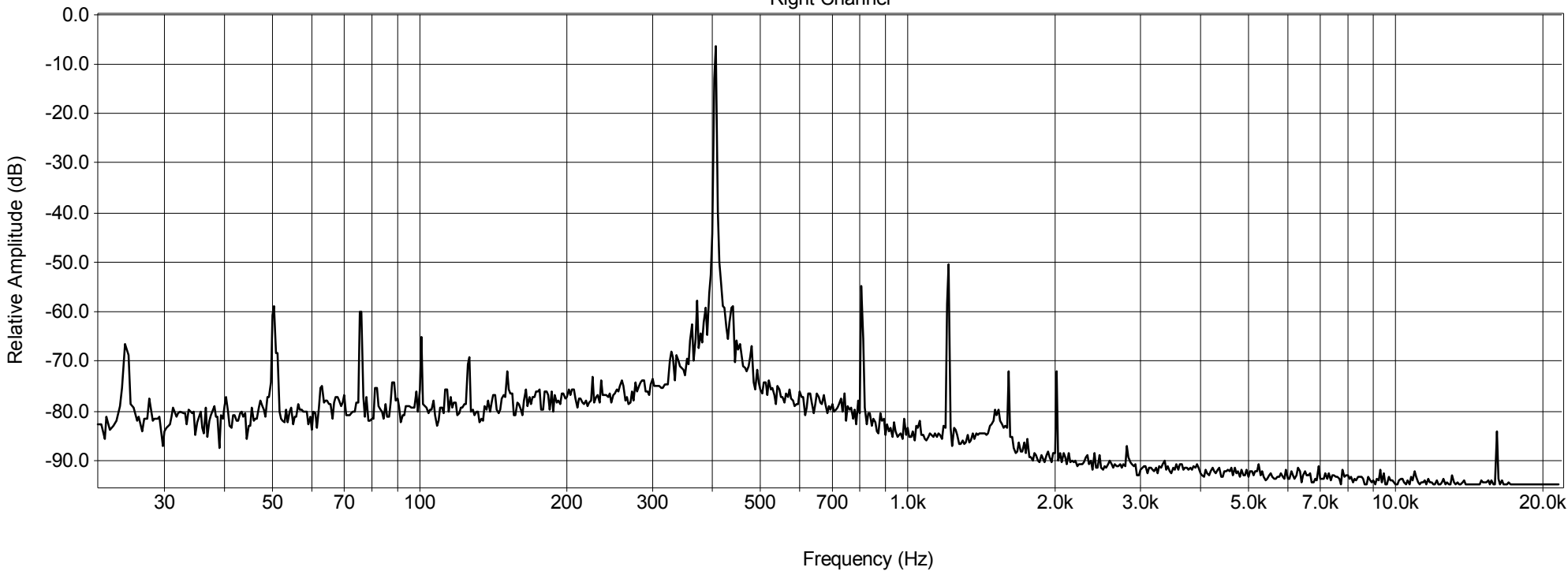
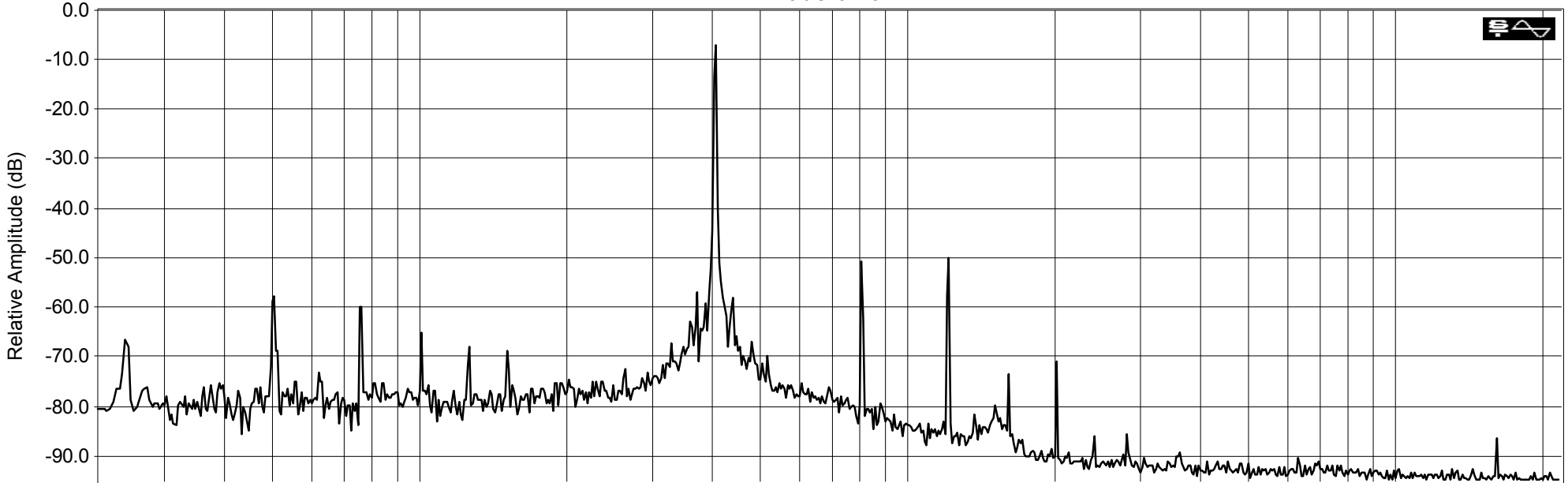
Left Channel



THD: 0.94830 %
Peak: -6.605 dB
Power: -6.285 dB

Right Channel

THD: 0.74436 %
Peak: -6.053 dB
Power: -5.742 dB



#A

90

ULTRA SLIM

POSITION CHROME



CDit II

IEC II / TYPE II - HIGH BIAS 70 μ s EQ

46 50 54 74 90

REC. TIME / DANCE
90 min (2 x 45 min)

Made in E.C.
Fabriqué en C.E.E.



SONY

90

POSITION CHROME

CDit II

ULTRA SLIM

IEC II / TYPE II - HIGH BIAS 70 μ s EQ

