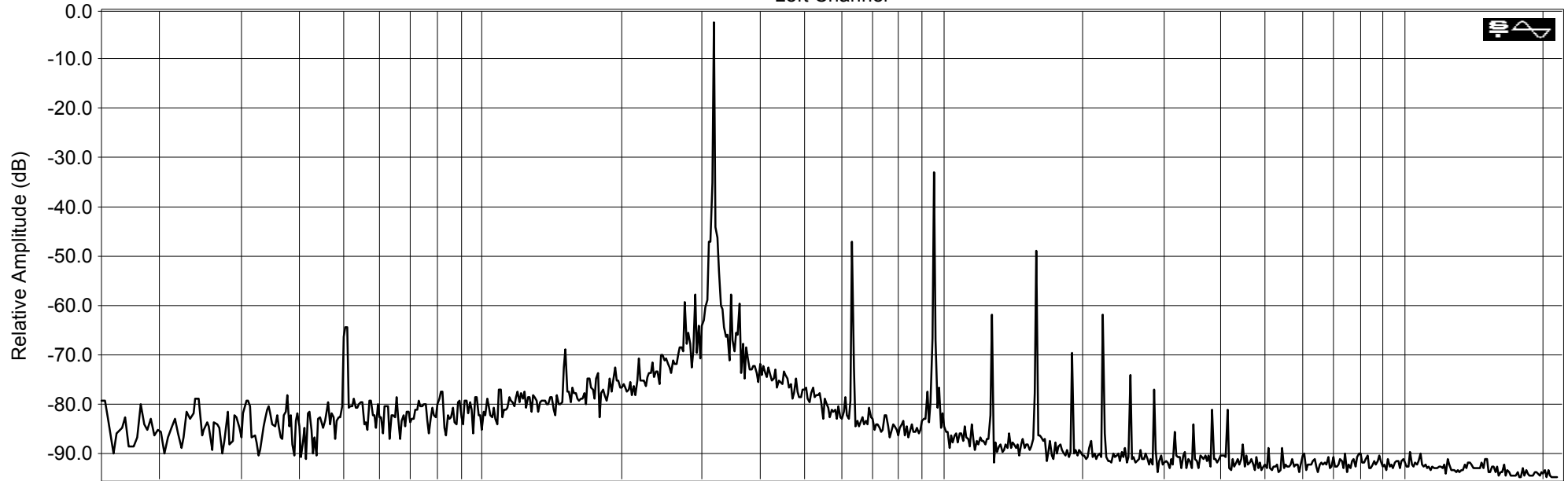


Sampling: 44100 Hz
FFT size: 131072
Averaging: 1
Window: Hanning
Overlap: 0 %

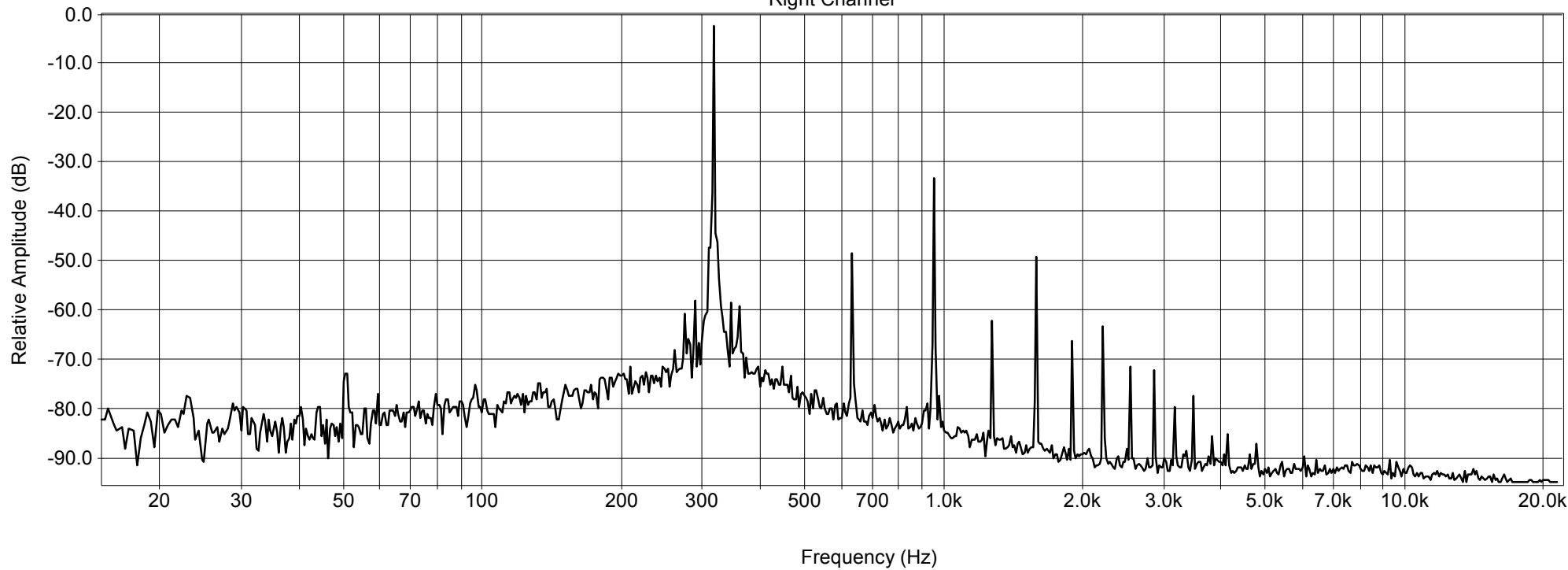
MOL315 Point ELP HD-90

Printed by: SpectraLAB - FFT Spectral Analysis System
Licensed to: boost
Sat Oct 29 00:47:50 2011

Left Channel



Right Channel



Sampling: 44100 Hz
FFT size: 131072
Averaging: 1
Window: Hanning
Overlap: 0 %

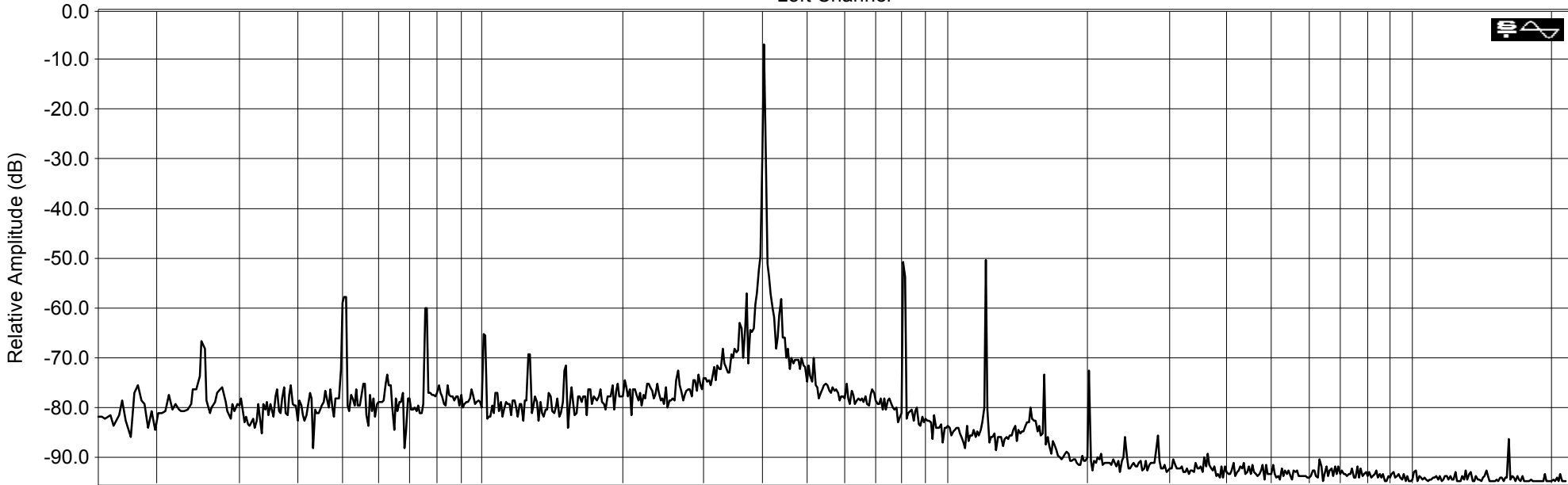
MOL315
Ref. level 250nWb

Printed by: SpectraLAB - FFT Spectral Analysis System
Licensed to: boost
Sat Oct 29 00:48:38 2011

Left Channel

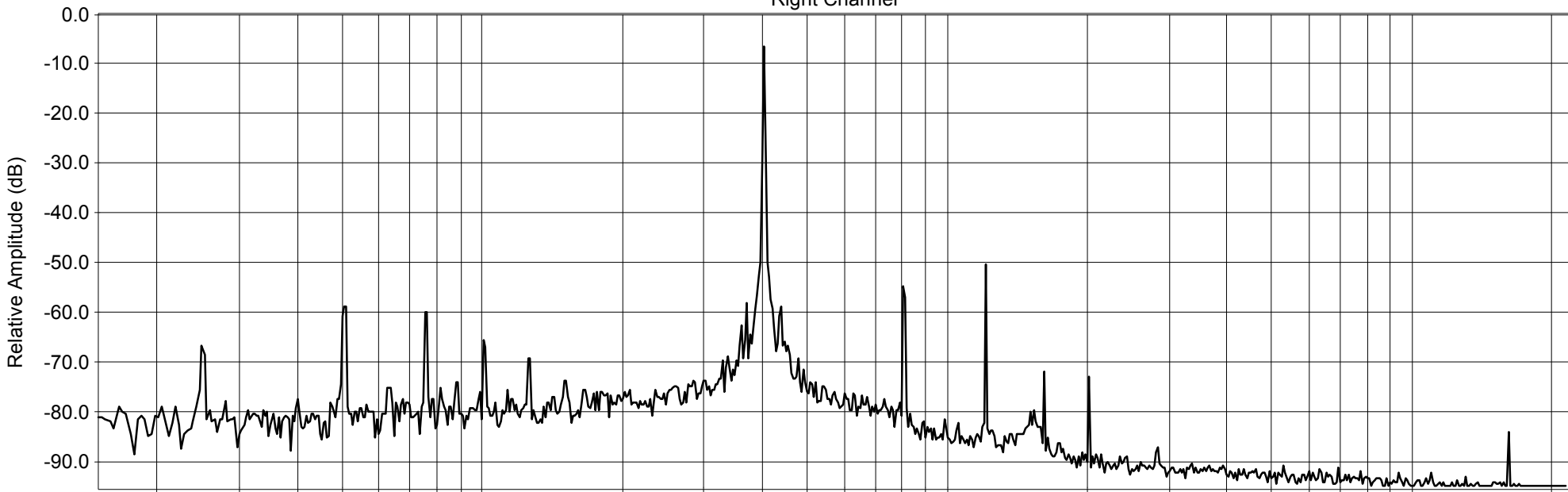


THD: 0.94765 %
Peak: -6.605 dB
Power: -6.289 dB



Right Channel

THD: 0.74401 %
Peak: -6.053 dB
Power: -5.745 dB



Frequency (Hz)

