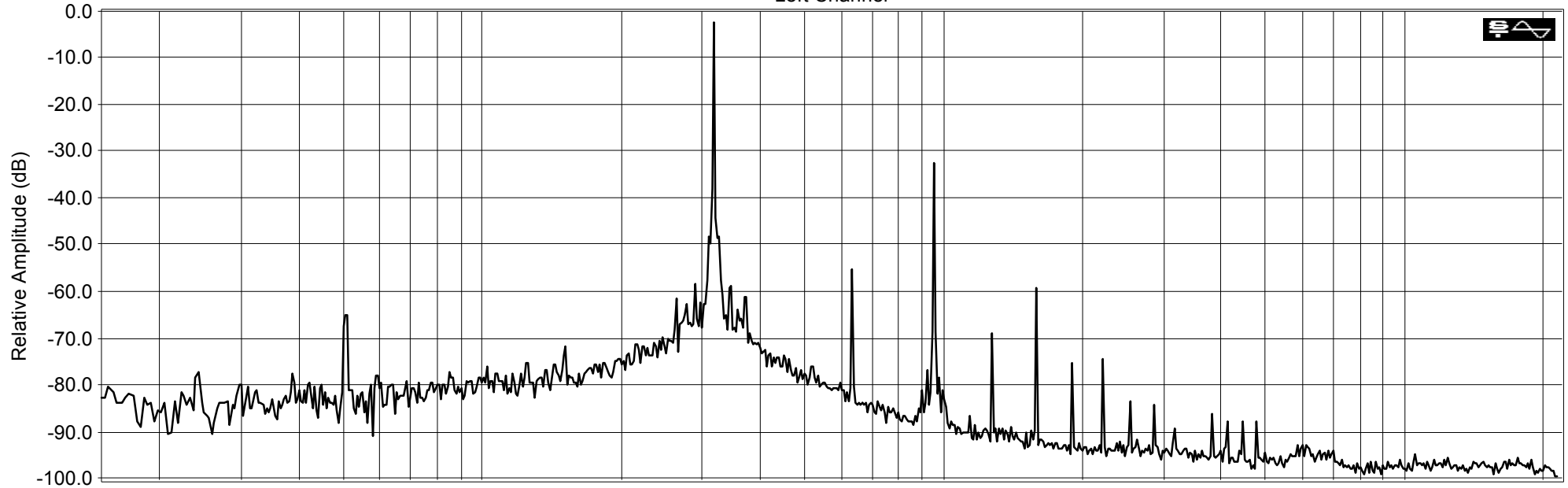


Sampling: 44100 Hz
FFT size: 131072
Averaging: 1
Window: Hanning
Overlap: 0 %

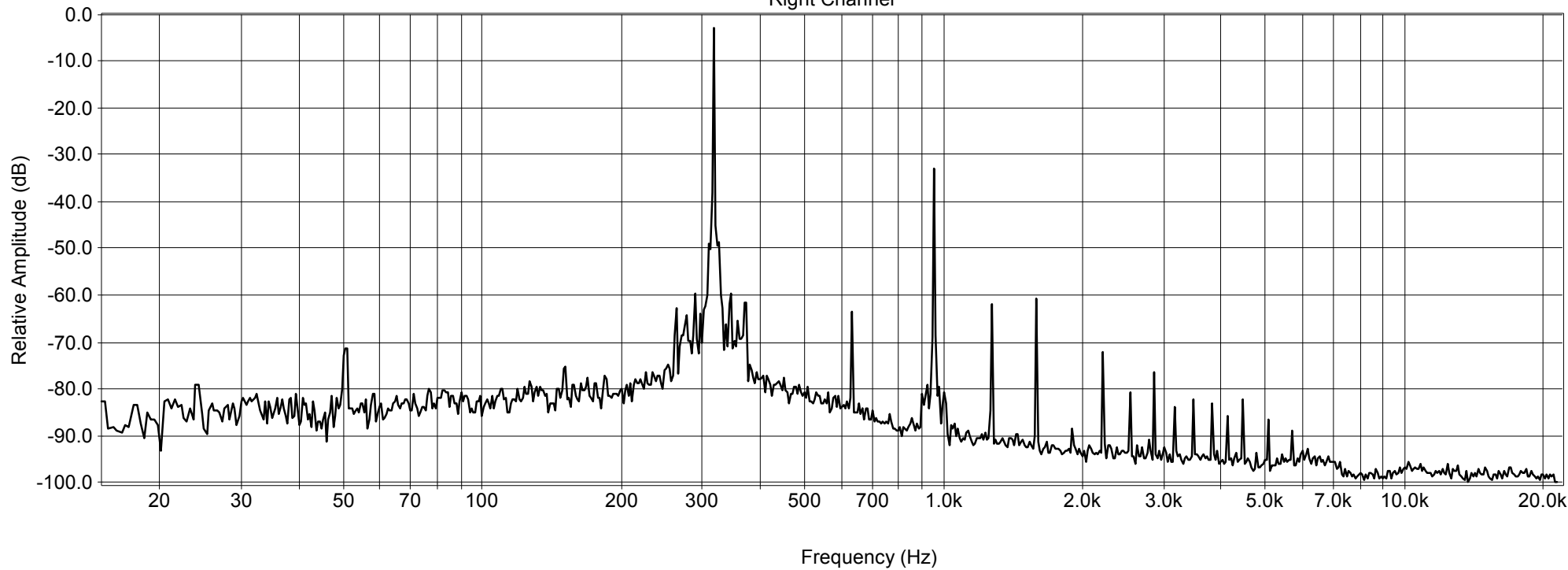
MOL315 Maxell XLII 90 (UK)

Printed by: SpectraLAB - FFT Spectral Analysis System
Licensed to: boost
Fri Oct 28 22:20:04 2011

Left Channel



Right Channel



Sampling: 44100 Hz
FFT size: 131072
Averaging: 1
Window: Hanning
Overlap: 0 %

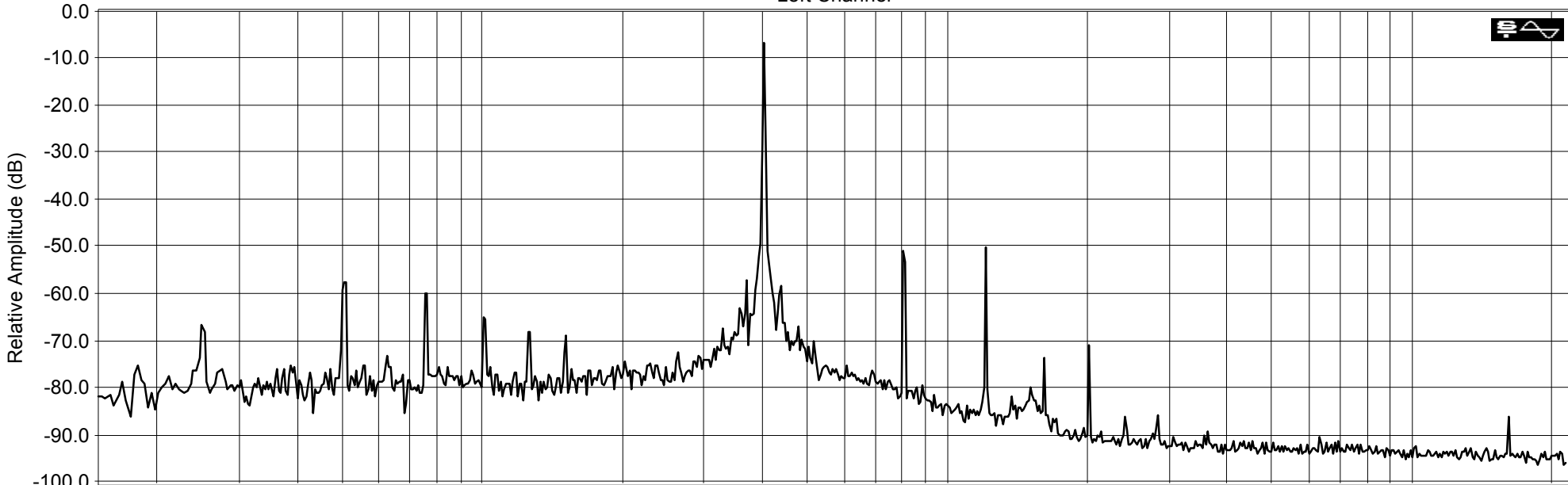
MOL315
Ref.Level 250nWb

Printed by: SpectraLAB - FFT Spectral Analysis System
Licensed to: boost
Fri Oct 28 22:20:47 2011

Left Channel

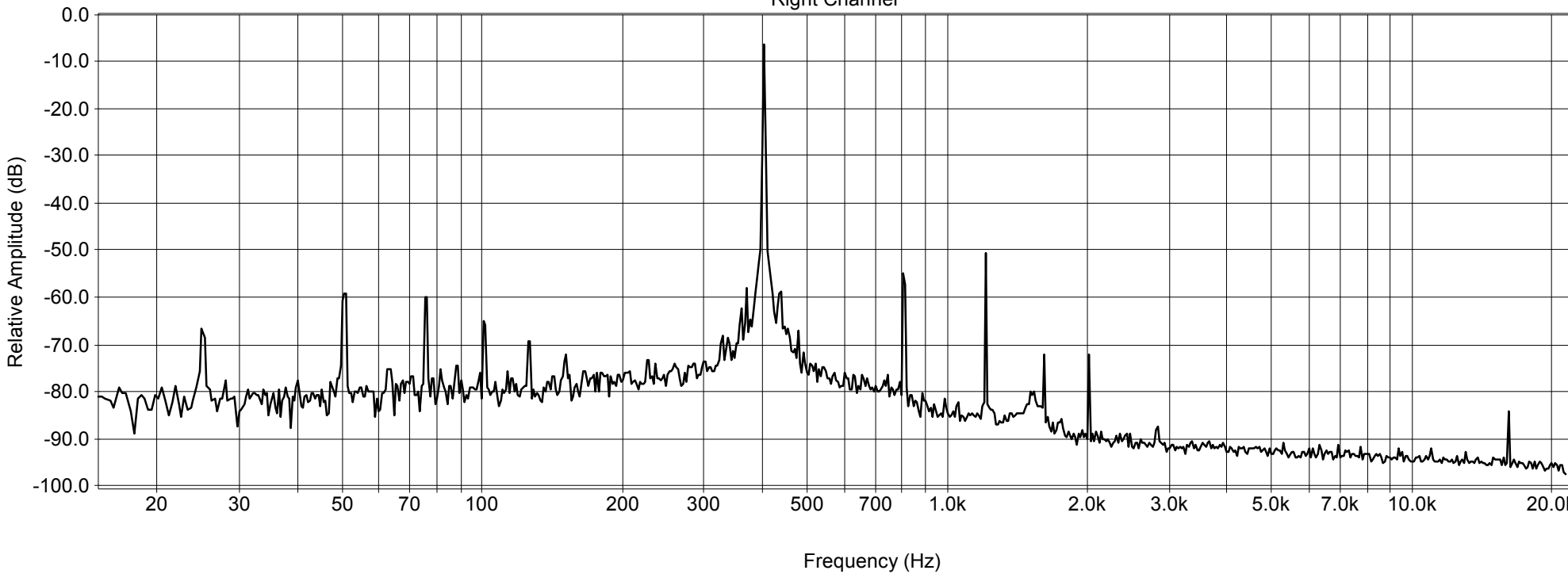


THD: 0.94830 %
Peak: -6.605 dB
Power: -6.285 dB



Right Channel

THD: 0.74436 %
Peak: -6.053 dB
Power: -5.742 dB





XLII 90

MAXELL

XLII **XLII-S**

POSITION HIGH (C10)
IEC/TYPE II EQ. 70µs



RECOMMENDED USE / EMPFOHLENE EINSATZMÖGLICHKEITEN
ADEQUATION OPTIMALE / USO RECOMENDADO
UTILIZZO RACCOMANDATO / AANBEVOLEN GEBRUIK

The * rating denotes the best use with individual equipment.
Je mehr * desto idealer ist die Kombination von Cassette und Tonwelle.
L'astérisque * indique la meilleure adéquation cassette-magnétique.
La cantidad de símbolos * denota mejor uso con el equipo relacionado.
La * indica il miglior uso con apparecchiatura individuale.
Het aantal * geeft aan welke tape het meest geschikt is voor gebruik in de daaropgevoerde apparatuur.

Maxell Europe Ltd., Apeldoorn, The Netherlands
Maxell Europe Ltd., Apeldoorn, The Netherlands



BIAS



AFI VISION 7/94
AUDIO CASSETTE TEST
sehr gut

GRANDPRIX
153

XLII

ENERGY
AND ANTI
CASSETTE

10-OUTPUT
BLACK MAGNETTE

90

maxell

XLII

POSITION
IEC/TYPE II
HIGH

90