

DRAWING NUMBER	ISSUE
S-S2000AS-02A	



A DIVISION OF HARMAN INTERNATIONAL INDUSTRIES LIMITED
CRANBORNE HOUSE
CRANBORNE ROAD
POTTERS BAR
HERTFORDSHIRE
EN6 3JN
TEL: +44 (0)1707 665000
FAX: +44 (0)1707 660482

TITLE: E6 MIXER

SHEET 1 OF 10

FILENAME: S-S2000AS-02A.SCH

DRAWN: AC

DATE: 20/01/02

CHECKED:

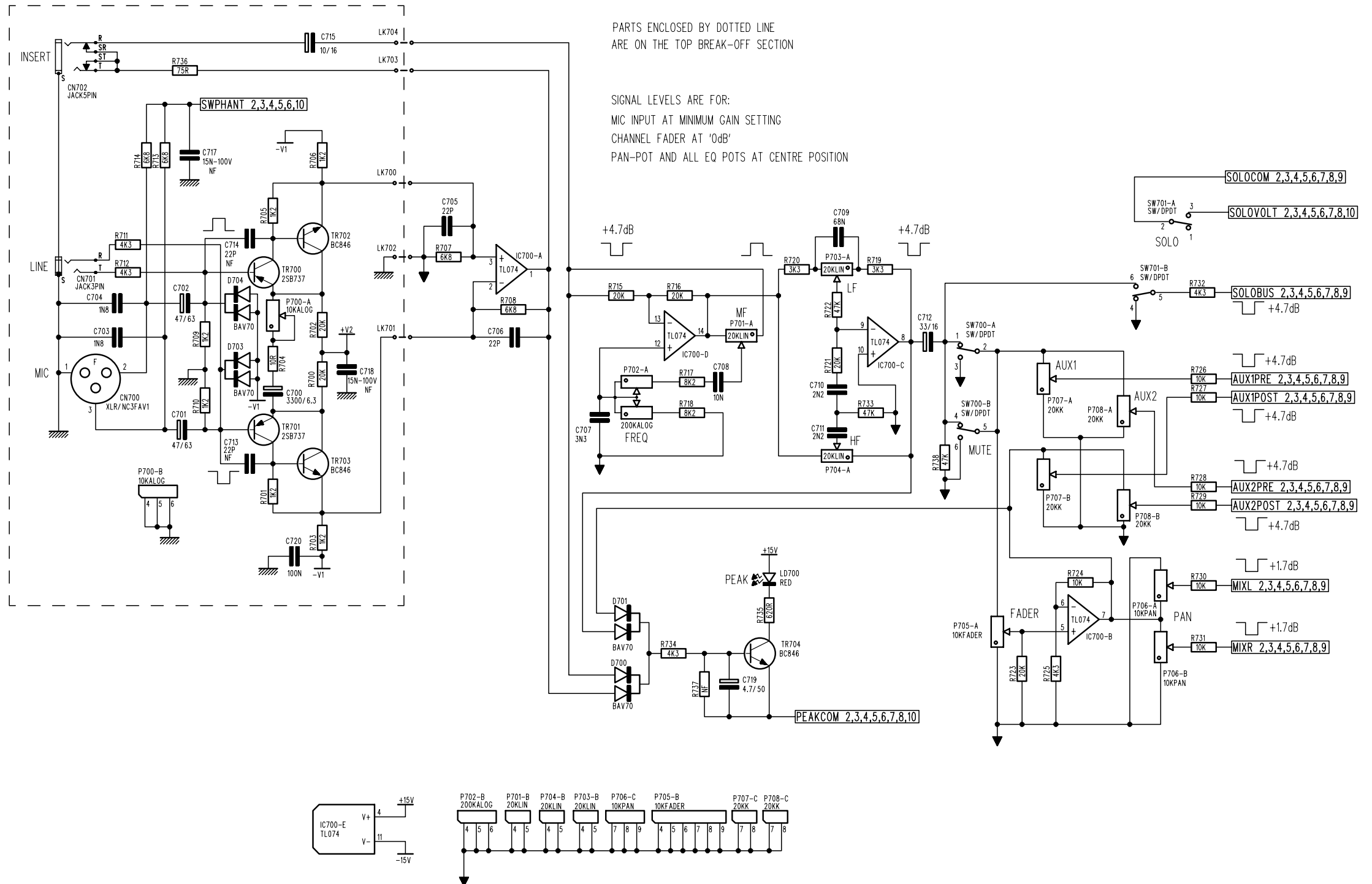
MATERIAL:

FINISH:

ISSUE COMMENTS:

1. PROTOTYPE RELEASE 29/01/01
2. PRODUCTION RELEASE 08/07/02
2A. ECN0619 22/10/02

SOUNDCRAFT OWN THE COPYRIGHT OF THIS DRAWING
WHICH IS NOT TO BE COPIED, REPRODUCED OR DISCLOSED
IN PART OR WHOLE TO A THIRD PARTY WITHOUT PRIOR WRITTEN PERMISSION
©SOUNDCRAFT, A DIVISION OF HARMAN INTERNATIONAL INDUSTRIES LIMITED



DRAWING NUMBER ISSUE
S-S2000AS-02A

Soundcraft
A DIVISION OF HARMAN INTERNATIONAL INDUSTRIES LIMITED
CRANBORNE HOUSE
CRANBORNE ROAD
POTTERS BAR
HERTFORDSHIRE
EN6 3JN
TEL: +44 (0)1707 665000
FAX: +44 (0)1707 660482

TITLE: **E6 MIXER**

SHEET 2 OF 10
FILENAME: S-S2000AS-02A.SCH

DRAWN: AC

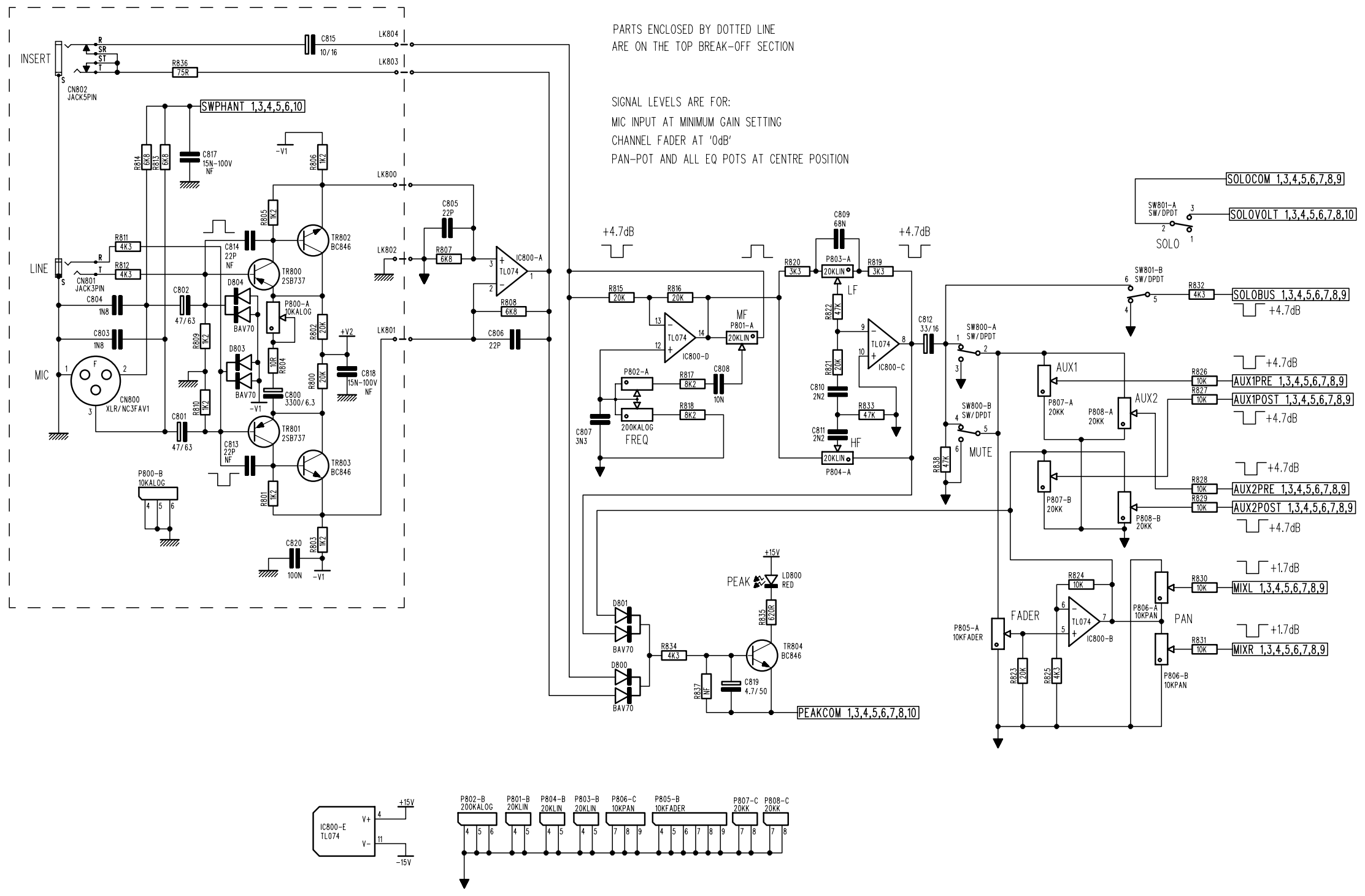
DATE: 20/01/02

CHECKED:

MATERIAL:

FINISH:

ISSUE COMMENTS:



SOUNDRAFT OWN THE COPYRIGHT OF THIS DRAWING
WHICH IS NOT TO BE COPIED, REPRODUCED OR DISCLOSED
IN PART OR WHOLE TO A THIRD PARTY WITHOUT PRIOR WRITTEN PERMISSION
©SOUNDRAFT, A DIVISION OF HARMAN INTERNATIONAL INDUSTRIES LIMITED

DRAWING NUMBER ISSUE
S-S2000AS-02A

Soundcraft
A DIVISION OF HARMAN INTERNATIONAL INDUSTRIES LIMITED
CRANBORNE HOUSE
CRANBORNE ROAD
POTTERS BAR
HERTFORDSHIRE
EN6 3JN
TEL: +44 (0)1707 665000
FAX: +44 (0)1707 660482

TITLE: **E6 MIXER**

SHEET 3 OF 10
FILENAME: S-S2000AS-02A.SCH

DRAWN: AC

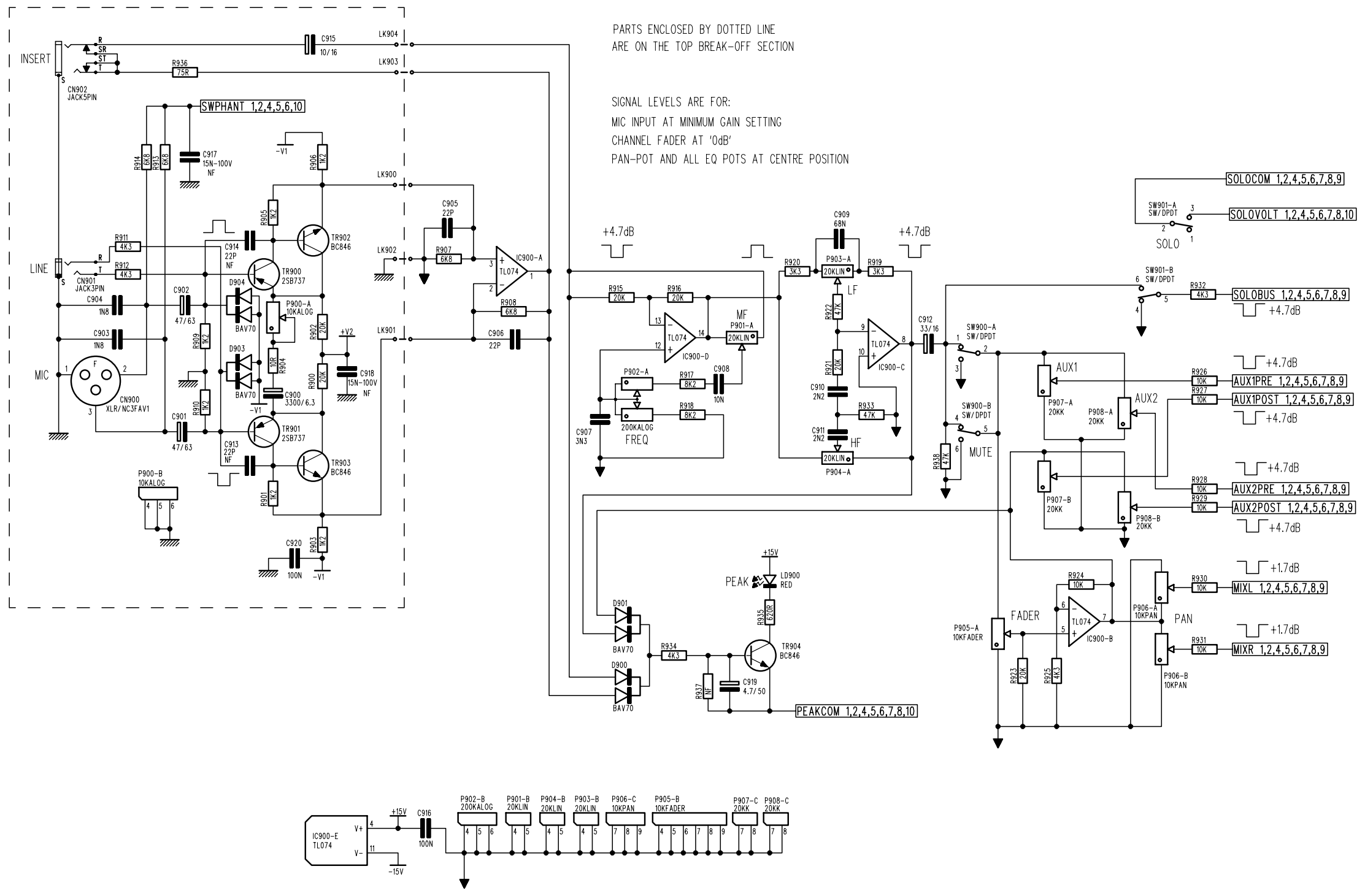
DATE: 20/01/02

CHECKED:

MATERIAL:

FINISH:

ISSUE COMMENTS:



SOUNDCRAFT OWN THE COPYRIGHT OF THIS DRAWING
WHICH IS NOT TO BE COPIED, REPRODUCED OR DISCLOSED
IN PART OR WHOLE TO A THIRD PARTY WITHOUT PRIOR WRITTEN PERMISSION
©SOUNDCRAFT, A DIVISION OF HARMAN INTERNATIONAL INDUSTRIES LIMITED

DRAWING NUMBER ISSUE
S-S2000AS-02A

Soundcraft
A DIVISION OF HARMAN INTERNATIONAL INDUSTRIES LIMITED
CRANBORNE HOUSE
CRANBORNE ROAD
POTTERS BAR
HERTFORDSHIRE
EN6 3JN
TEL: +44 (0)1707 665000
FAX: +44 (0)1707 660482

TITLE: **E6 MIXER**

SHEET 4 OF 10

FILENAME: S-S2000AS-02A.SCH

DRAWN: AC

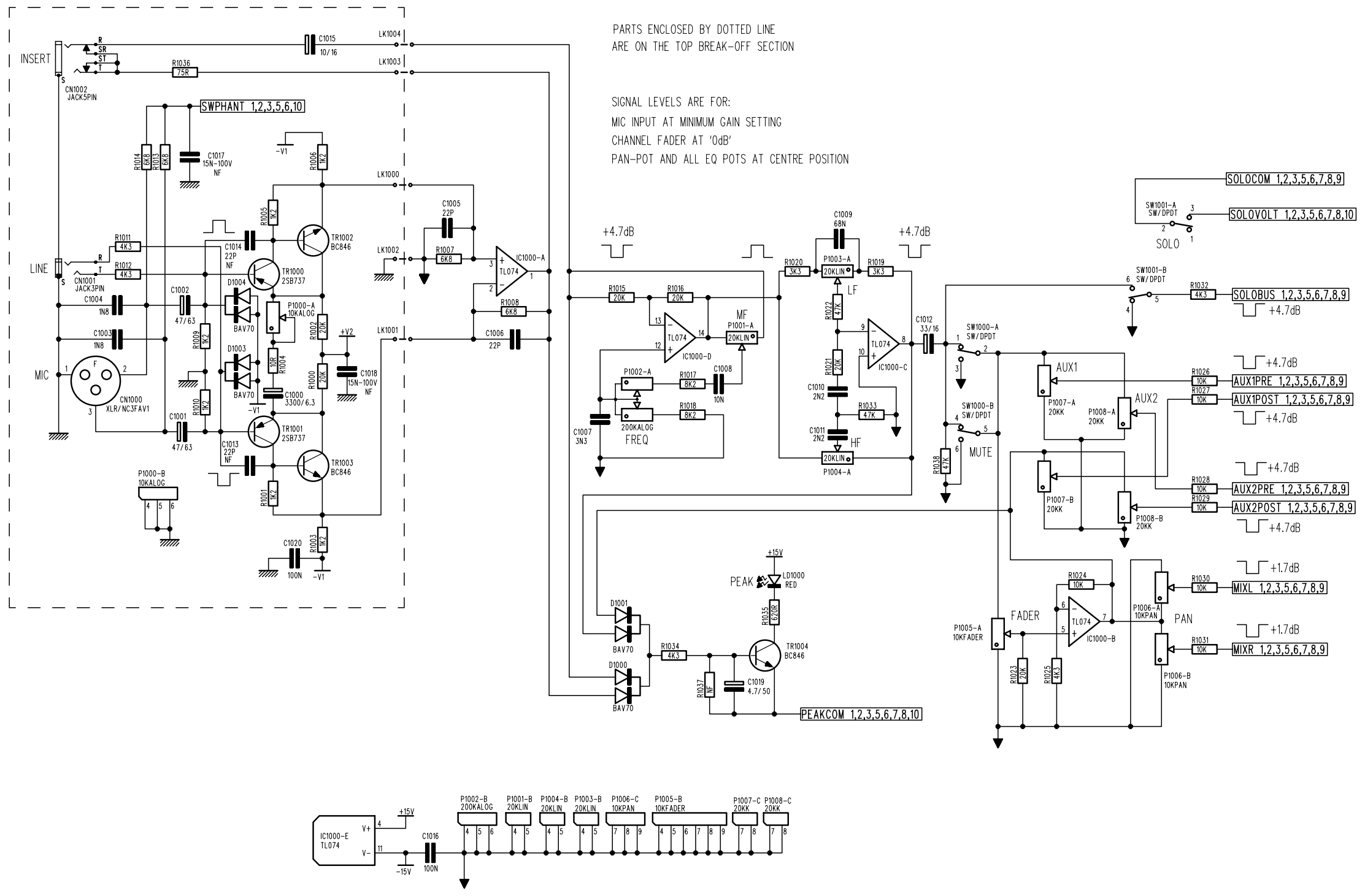
DATE: 20/01/02

CHECKED:

MATERIAL:

FINISH:

ISSUE COMMENTS:



SOUNDCRAFT OWN THE COPYRIGHT OF THIS DRAWING
WHICH IS NOT TO BE COPIED, REPRODUCED OR DISCLOSED
IN PART OR WHOLE TO A THIRD PARTY WITHOUT PRIOR WRITTEN PERMISSION
©SOUNDCRAFT, A DIVISION OF HARMAN INTERNATIONAL INDUSTRIES LIMITED

DRAWING NUMBER	ISSUE
S-S2000AS-02A	



A DIVISION OF HARMAN INTERNATIONAL INDUSTRIES LIMITED
CRANBORNE HOUSE
CRANBORNE ROAD
POTTERS BAR
HERTFORDSHIRE
EN6 3JN
TEL: +44 (0)1707 665000
FAX: +44 (0)1707 660482

TITLE: E6 MIXER

SHEET 5 OF 10

FILENAME: S-S2000AS-02A.SCH

DRAWN: AC

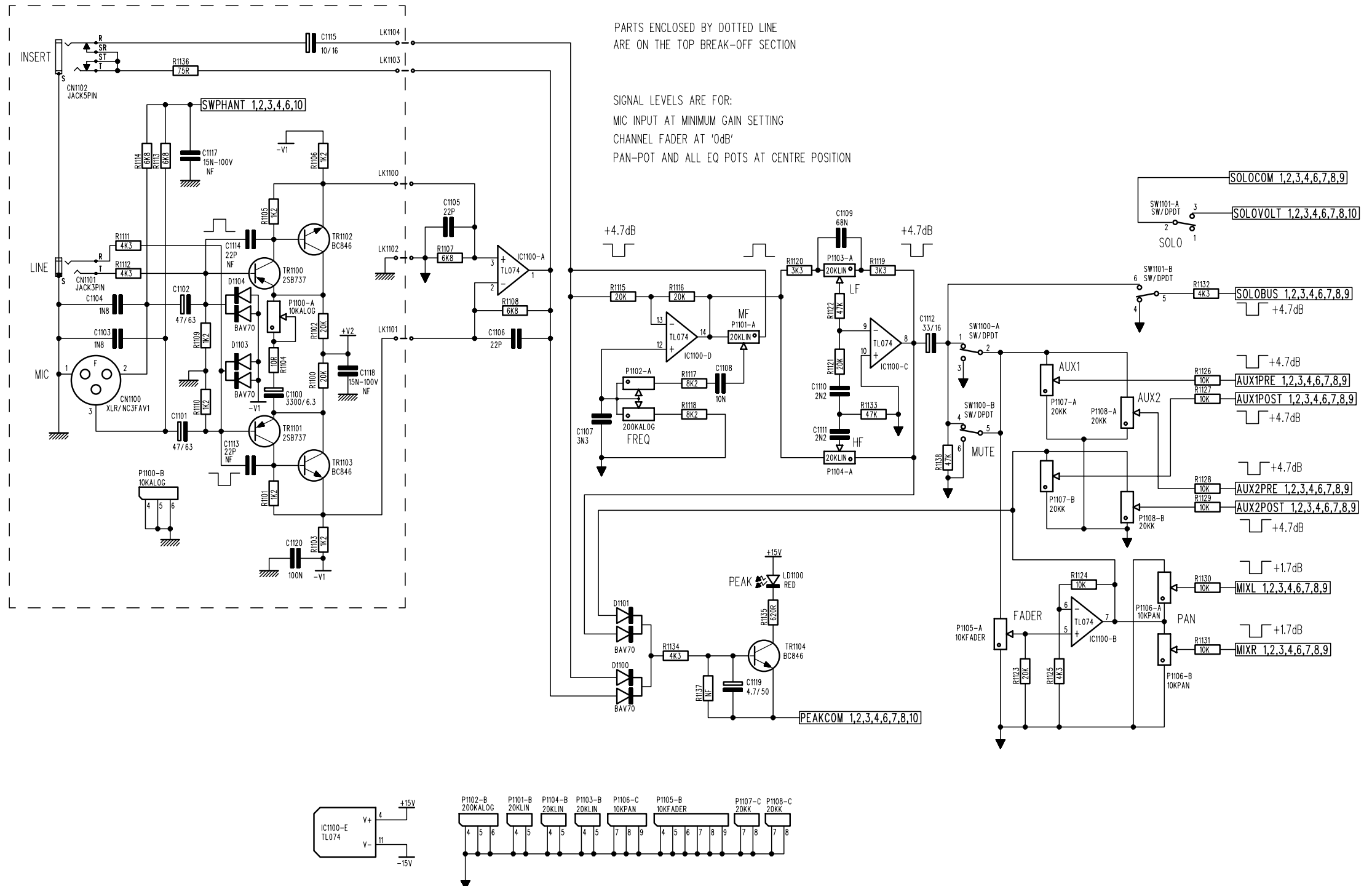
DATE: 20/01/02

CHECKED:

MATERIAL:

FINISH:

ISSUE COMMENTS:



SOUNDCRAFT OWN THE COPYRIGHT OF THIS DRAWING
WHICH IS NOT TO BE COPIED, REPRODUCED OR DISCLOSED
IN PART OR WHOLE TO A THIRD PARTY WITHOUT PRIOR WRITTEN PERMISSION
©SOUNDCRAFT, A DIVISION OF HARMAN INTERNATIONAL INDUSTRIES LIMITED

DRAWING NUMBER ISSUE
S-S2000AS-02A

Soundcraft
A DIVISION OF HARMAN INTERNATIONAL INDUSTRIES LIMITED
CRANBORNE HOUSE
CRANBORNE ROAD
POTTERS BAR
HERTFORDSHIRE
EN6 3JN
TEL: +44 (0)1707 665000
FAX: +44 (0)1707 660482

TITLE: **E6 MIXER**

SHEET 6 OF 10

FILENAME: S-S2000AS-02A.SCH

DRAWN: AC

DATE: 20/01/02

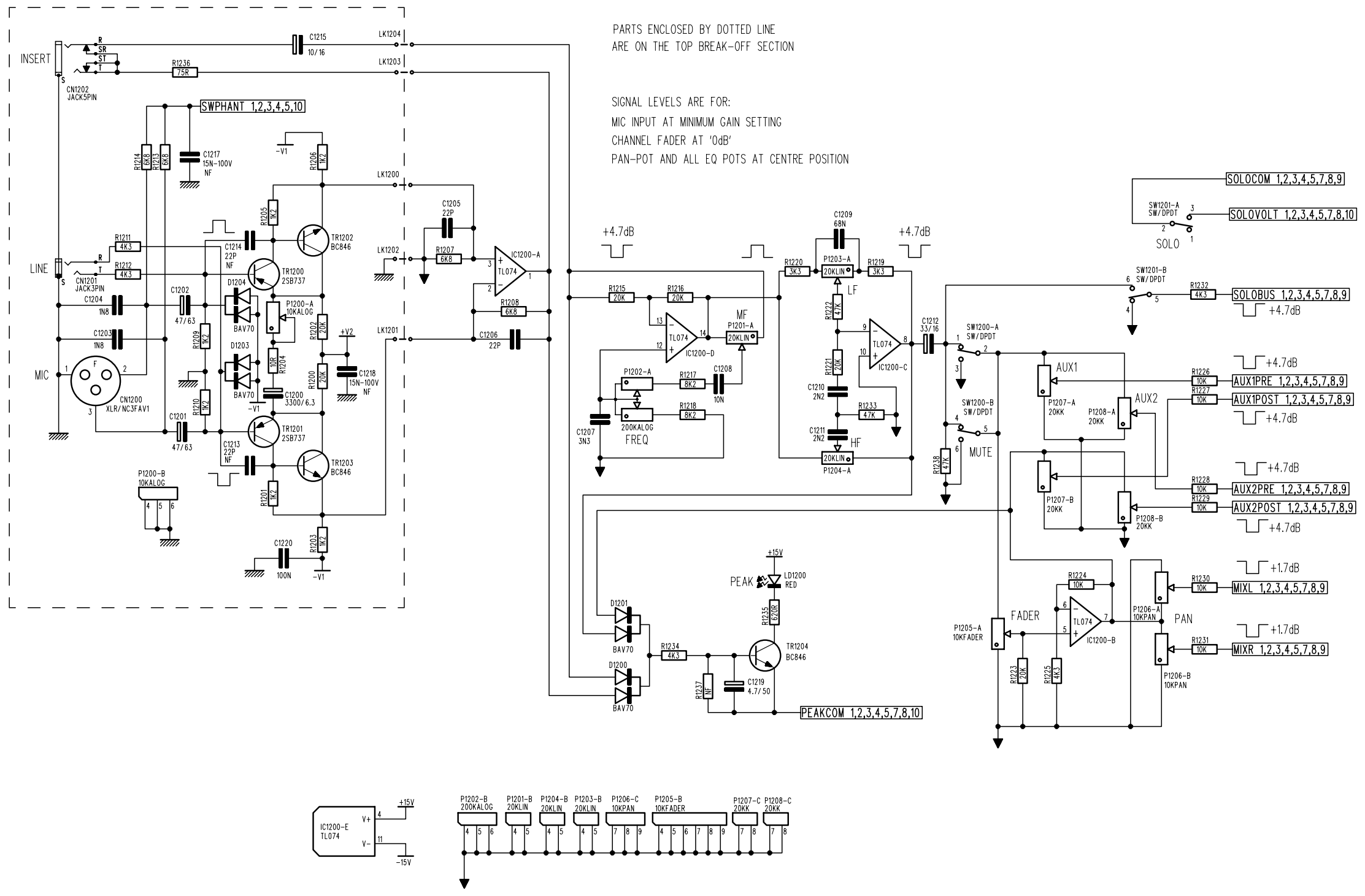
CHECKED:

MATERIAL:

FINISH:

ISSUE COMMENTS:

SOUNDCRAFT OWN THE COPYRIGHT OF THIS DRAWING
WHICH IS NOT TO BE COPIED, REPRODUCED OR DISCLOSED
IN PART OR WHOLE TO A THIRD PARTY WITHOUT PRIOR WRITTEN PERMISSION
©SOUNDCRAFT, A DIVISION OF HARMAN INTERNATIONAL INDUSTRIES LIMITED



DRAWING NUMBER	ISSUE
S-S2000AS-02A	



A DIVISION OF HARMAN INTERNATIONAL INDUSTRIES LIMITED
CRANBORNE HOUSE
CRANBORNE ROAD
POTTERS BAR
HERTFORDSHIRE
EN6 3JN
TEL: +44 (0)1707 665000
FAX: +44 (0)1707 660482

TITLE: E6 MIXER

SHEET 7 OF 10

FILENAME: S-S2000AS-02A.SCH

DRAWN: AC

DATE: 20/01/02

CHECKED:

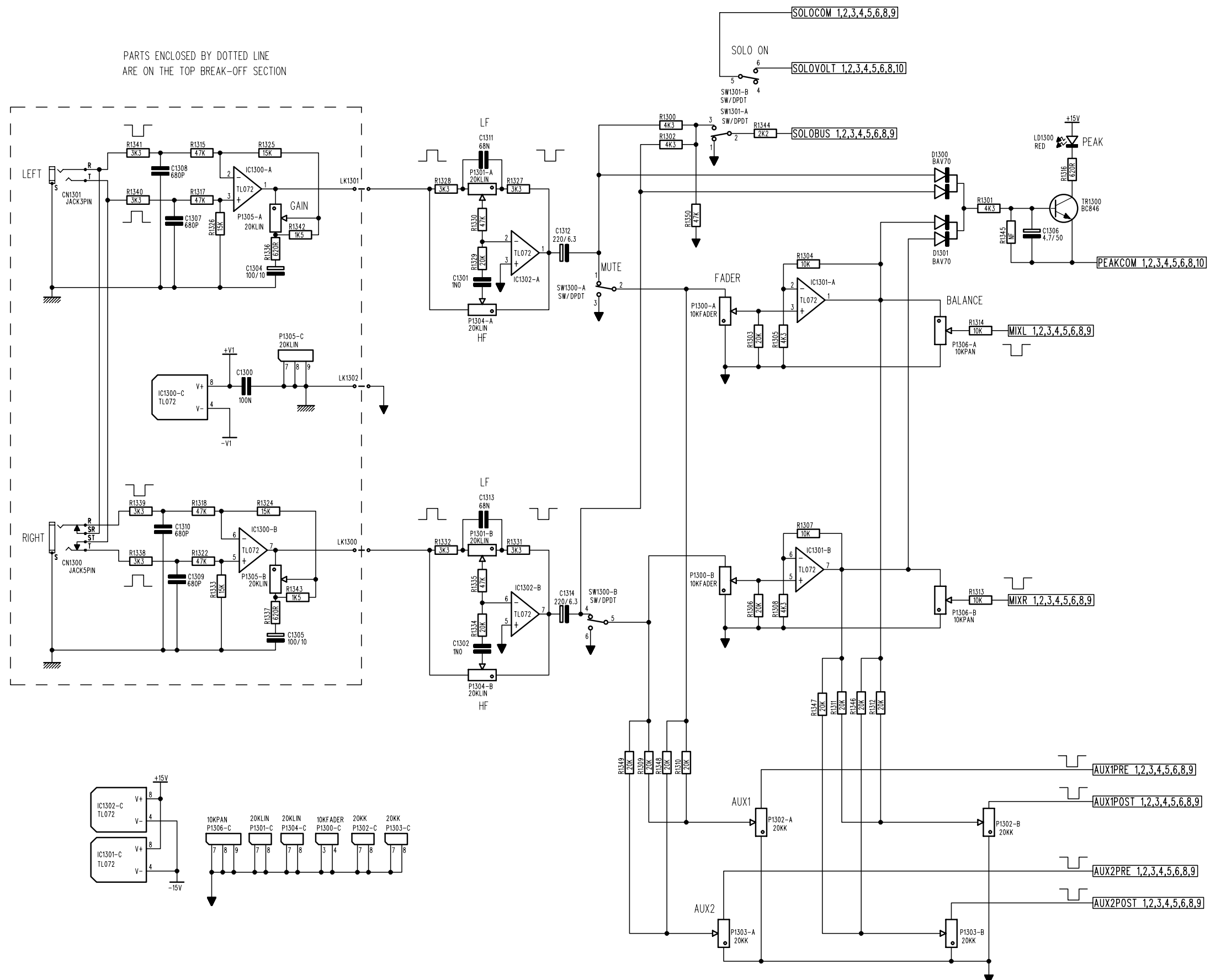
MATERIAL:

FINISH:

ISSUE COMMENTS:

SOUNDCRAFT OWN THE COPYRIGHT OF THIS DRAWING
WHICH IS NOT TO BE COPIED, REPRODUCED OR DISCLOSED
IN PART OR WHOLE TO A THIRD PARTY WITHOUT PRIOR WRITTEN PERMISSION
©SOUNDCRAFT, A DIVISION OF HARMAN INTERNATIONAL INDUSTRIES LIMITED

PARTS ENCLOSED BY DOTTED LINE
ARE ON THE TOP BREAK-OFF SECTION



DRAWING NUMBER ISSUE
S-S2000AS-02A

Soundcraft
A DIVISION OF HARMAN INTERNATIONAL INDUSTRIES LIMITED
CRANBORNE HOUSE
CRANBORNE ROAD
POTTERS BAR
HERTFORDSHIRE
EN6 3JN
TEL: +44 (0)1707 665000
FAX: +44 (0)1707 660482

TITLE: **E6 MIXER**

SHEET 8 OF 10

FILENAME: S-S2000AS-02A.SCH

DRAWN: AC

DATE: 20/01/02

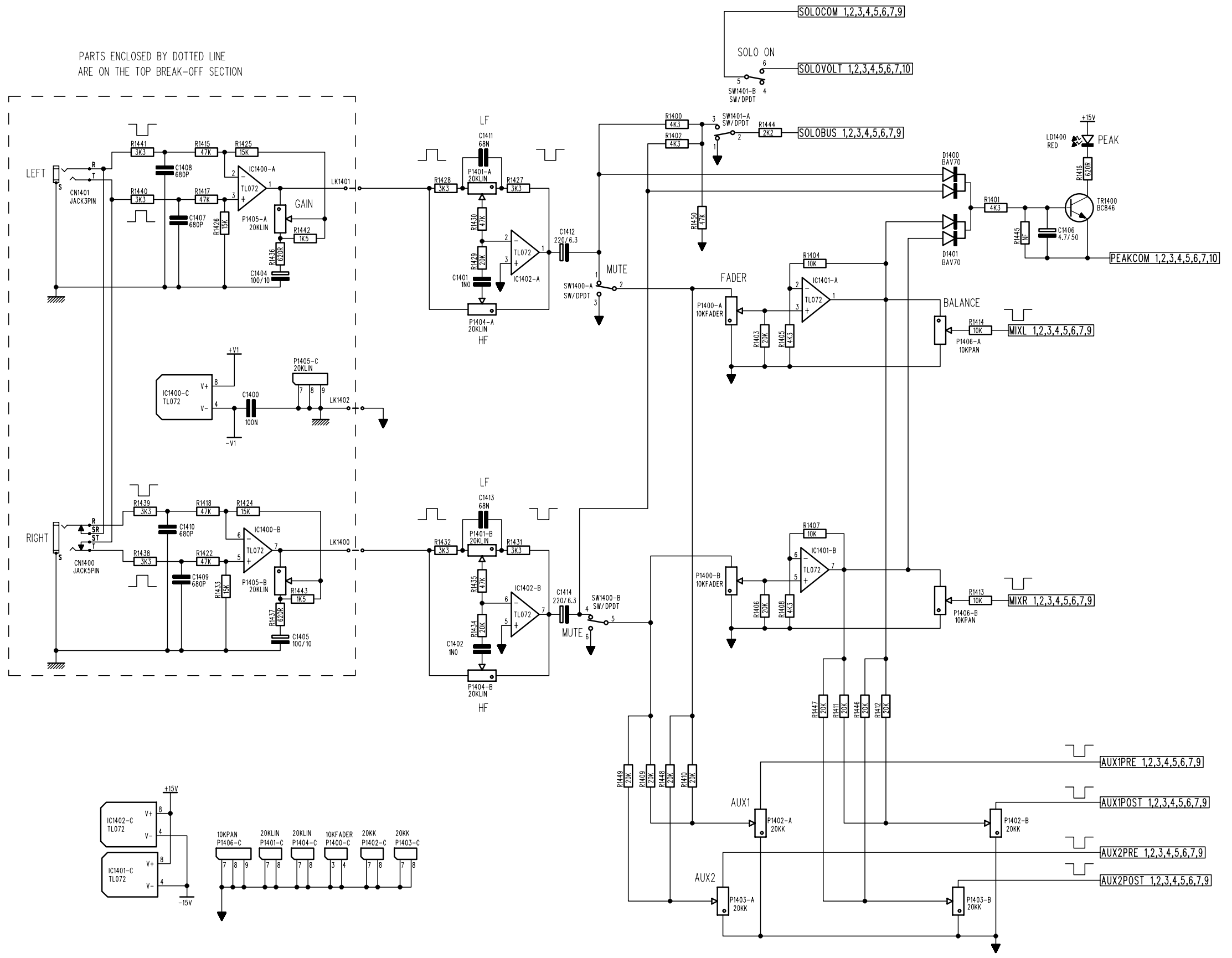
CHECKED:

MATERIAL:

FINISH:

ISSUE COMMENTS:

SOUNDCRAFT OWN THE COPYRIGHT OF THIS DRAWING
WHICH IS NOT TO BE COPIED, REPRODUCED OR DISCLOSED
IN PART OR WHOLE TO A THIRD PARTY WITHOUT PRIOR WRITTEN PERMISSION
©SOUNDCRAFT, A DIVISION OF HARMAN INTERNATIONAL INDUSTRIES LIMITED



DRAWING NUMBER ISSUE
S-S2000AS-02A

Soundcraft
A DIVISION OF HARMAN INTERNATIONAL INDUSTRIES LIMITED
CRANBORNE HOUSE
CRANBORNE ROAD
POTTERS BAR
HERTFORDSHIRE
EN6 3JN
TEL: +44 (0)1707 665000
FAX: +44 (0)1707 660482

TITLE: **E6 MIXER**

SHEET 9 OF 10

FILENAME: S-S2000AS-02A.SCH

DRAWN: AC

DATE: 20/01/02

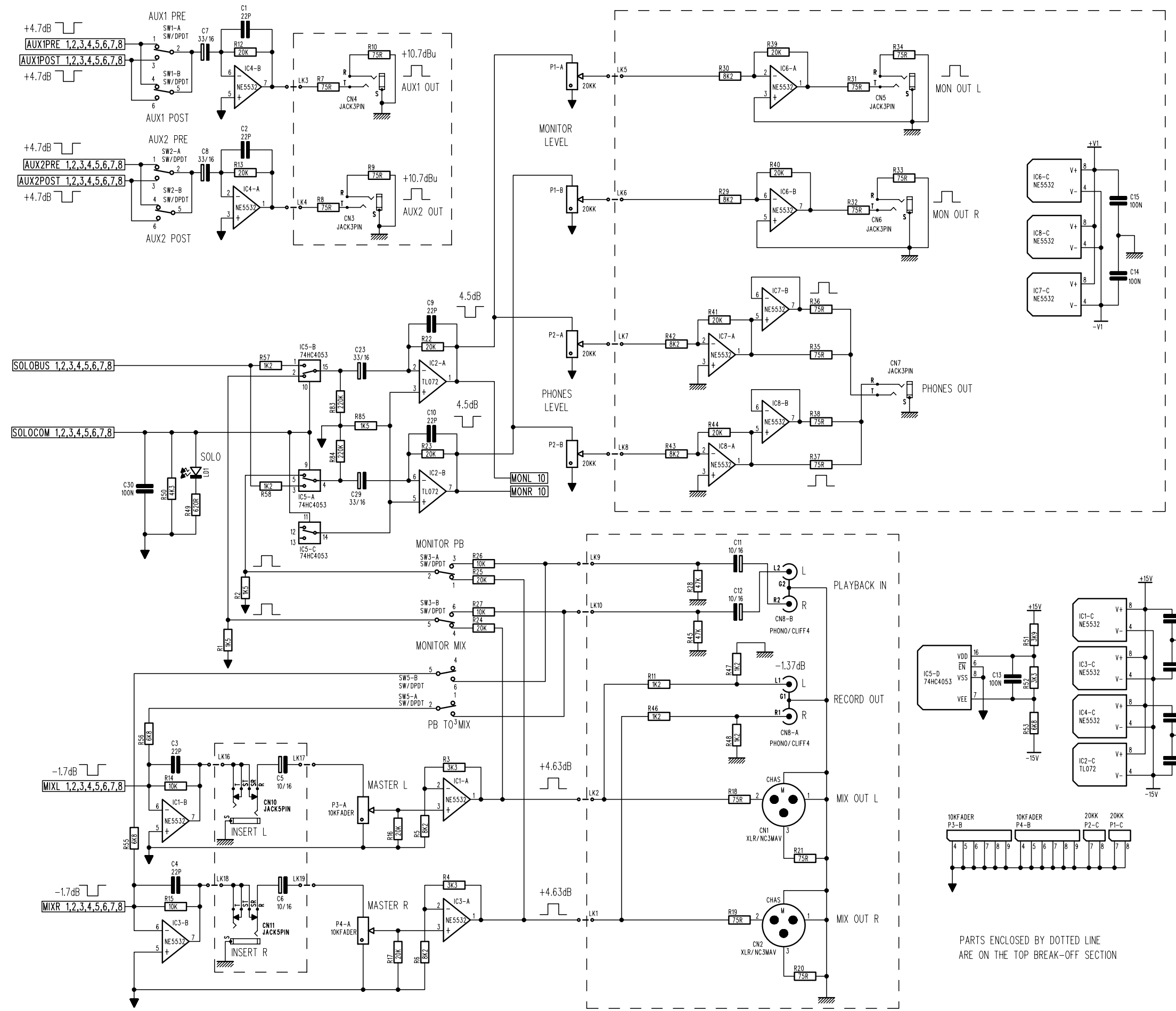
CHECKED:

MATERIAL:

FINISH:

ISSUE COMMENTS:

SOUNDCRAFT OWN THE COPYRIGHT OF THIS DRAWING
WHICH IS NOT TO BE COPIED, REPRODUCED OR DISCLOSED
IN PART OR WHOLE TO A THIRD PARTY WITHOUT PRIOR WRITTEN PERMISSION
©SOUNDCRAFT, A DIVISION OF HARMAN INTERNATIONAL INDUSTRIES LIMITED



PARTS ENCLOSED BY DOTTED LINE
ARE ON THE TOP BREAK-OFF SECTION

DRAWING NUMBER ISSUE
S-S2000AS-02A

Soundcraft
A DIVISION OF HARMAN INTERNATIONAL INDUSTRIES LIMITED
CRANBORNE HOUSE
CRANBORNE ROAD
POTTERS BAR
HERTFORDSHIRE
EN6 3JN
TEL: +44 (0)1707 665000
FAX: +44 (0)1707 660482

TITLE: **E6 MIXER**

SHEET 10 OF 10

FILENAME: S-S2000AS-02A.SCH

DRAWN: AC

DATE: 20/ 01/ 02

CHECKED:

MATERIAL:

FINISH:

ISSUE COMMENTS:

SOUNDCRAFT OWN THE COPYRIGHT OF THIS DRAWING
WHICH IS NOT TO BE COPIED, REPRODUCED OR DISCLOSED
IN PART OR WHOLE TO A THIRD PARTY WITHOUT PRIOR WRITTEN PERMISSION
©SOUNDCRAFT, A DIVISION OF HARMAN INTERNATIONAL INDUSTRIES LIMITED

