



Butterworth

2

Hz

100

Hz

-3

dB

2

v/v

Order

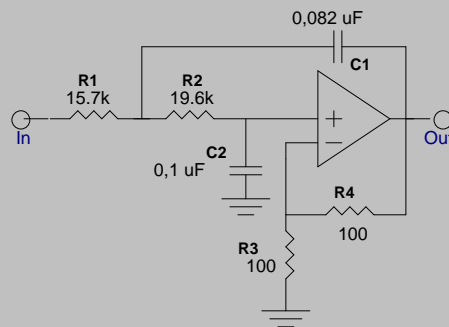
Cut-off Frequency

Ripple

Gain

Response

Circuit



## Circuit Options

To edit the component values, click on a capacitor value in the circuit above. You may then select a new value from the list, or enter an exact value. Resistor values are calculated based on the capacitors that are chosen. FilterLab will warn you if a value is not within an allowable range. All calculations are based on the approximation method, filter order, and cut-off frequency. Click here to visit Microchip's website for the MCP60x single supply op-amp data sheet: <http://www.microchip.com>

## Circuit Topology

☒ Sallen Key☐ Multiple Feedback (MFB)

## Resistor Selection

☒ Standard 1% Resistors☐ Exact Value

## Capacitor List

1 pF  
1.5 pF  
1.8 pF  
2.2 pF  
3.3 pF  
4.7 pF  
6.8 pF

## Help



Butterworth

Low Pass

0.28

17.10.2005